

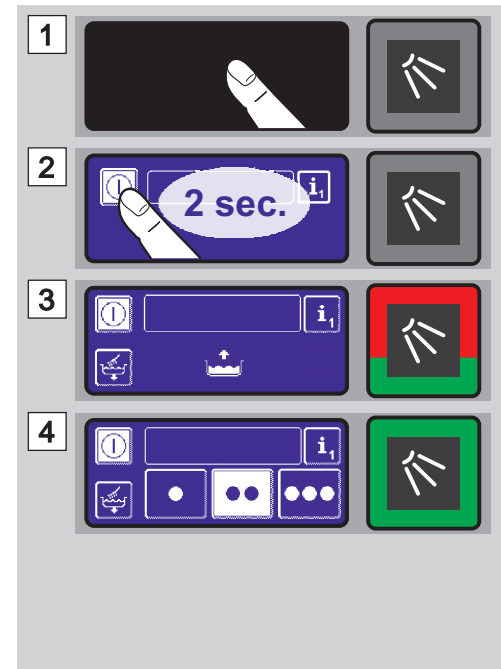
# UF Series



## Before switching on



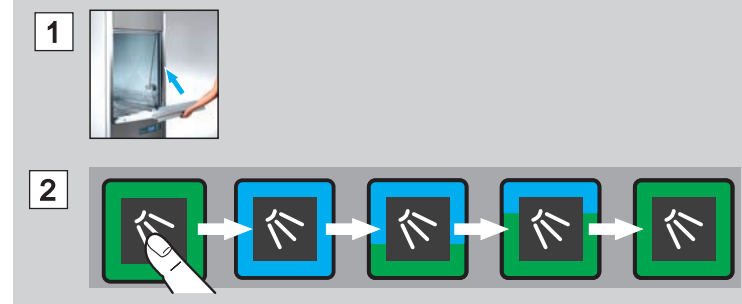
## Switching ON



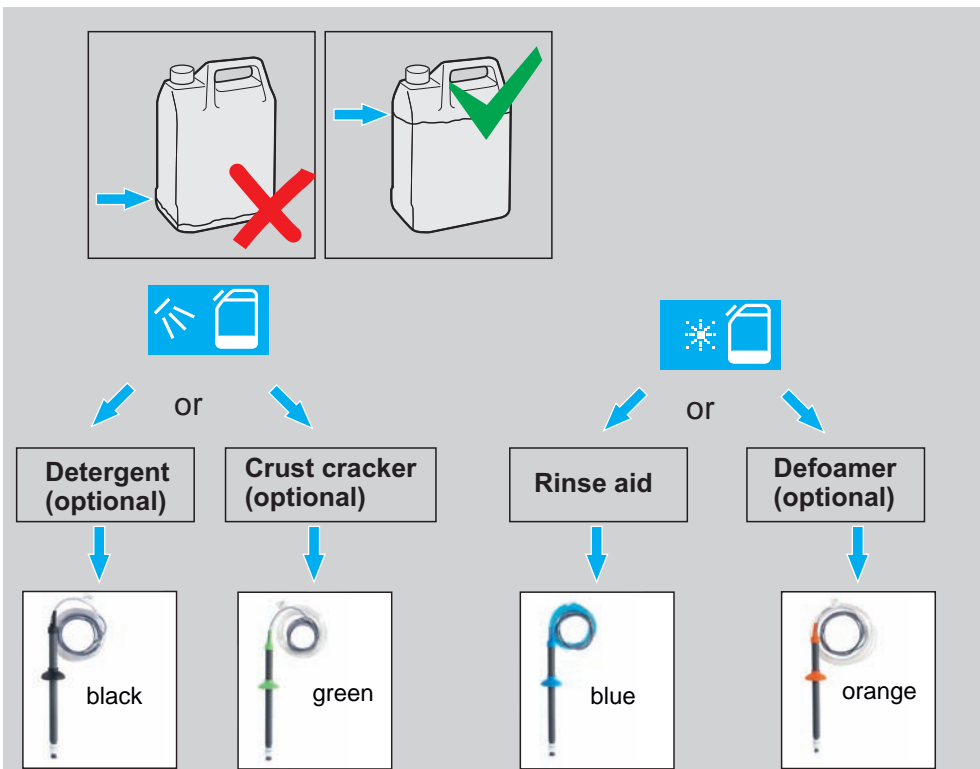
## Arranging the wash items



## Washing



## Changing the containers

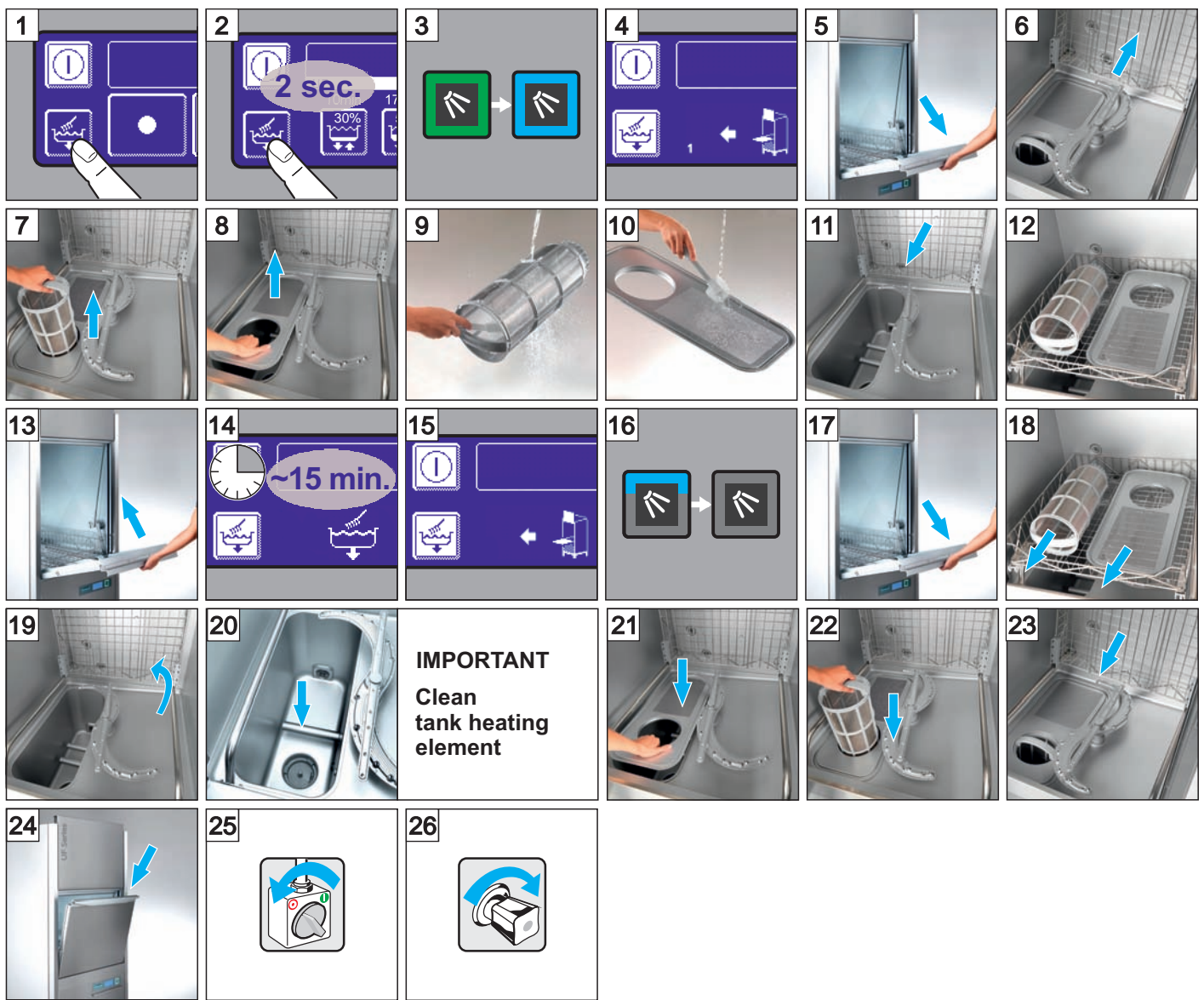


More information:  
See operating instructions  
[www.winterhalter.biz/manuals](http://www.winterhalter.biz/manuals)

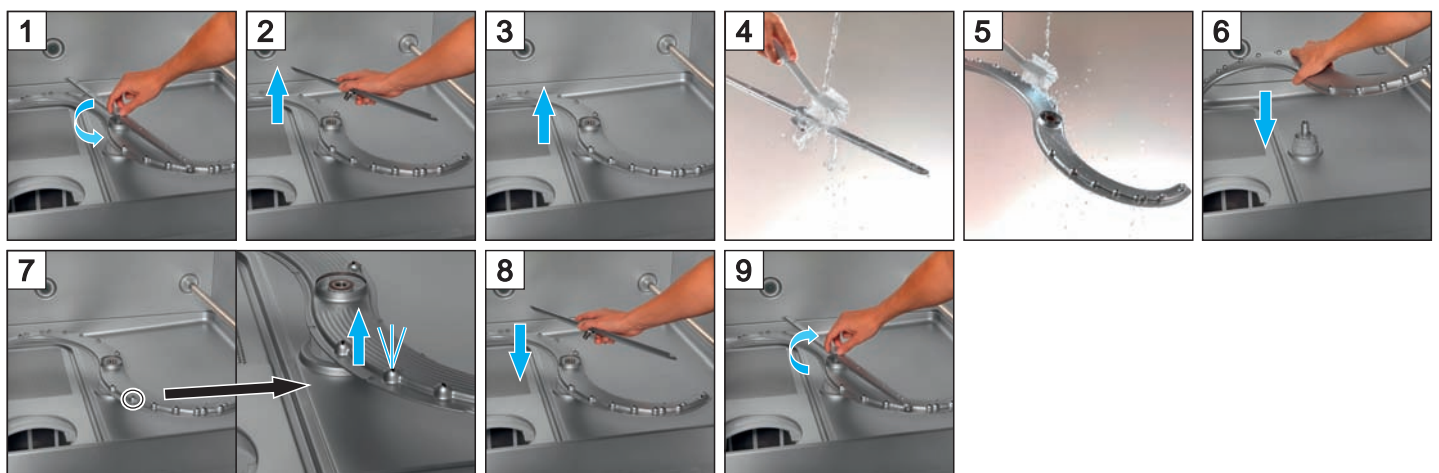


Winterhalter Gastronom GmbH  
D-88074 Meckenbeuren  
Tel. +49(0)7542 402-0  
[info@winterhalter.biz](mailto:info@winterhalter.biz)  
[www.winterhalter.biz](http://www.winterhalter.biz)

## Switching OFF + Cleaning



## Cleaning the wash arms



## Folding the door down (optional)

