

Disassembly



Ensure that **no oranges** remain in the supply tunnel or the pressing elements.



Ensure that the lower pressing elements are in a horizontal position.



Open the **Front Cover** fixation screws and take off the Front Cover. **CAUTION! Wash only by hand.**



Remove the **Cross Holder** by loosening and pulling the screw.



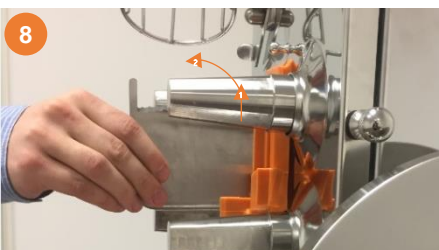
Take off the **upper pressing elements**.



Take off the **peel ejectors**.



Take off the **lower pressing elements**. **During Assembly:** Lower pressing elements must be flush with shaft.



Remove the **SCS knife** by moving it upward and pulling it off. **CAUTION! Risk of injury!**



Take off the **fruit supply tunnel** by opening the fixation lever.



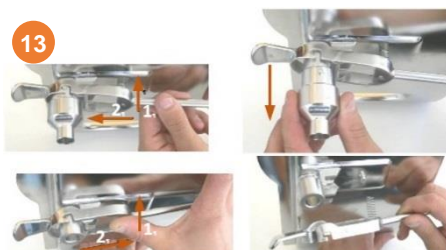
Take off the **Double Cover**. **Clean** front with **clear water** and **wet cloth**.



Remove the complete **MTS-System** (fruit sieve, fruit sieve holder, MTS slider)



Remove the **peel bucket** from the machine.



Disassemble the **Self-Service Tap** in the shown order.

! Attention!

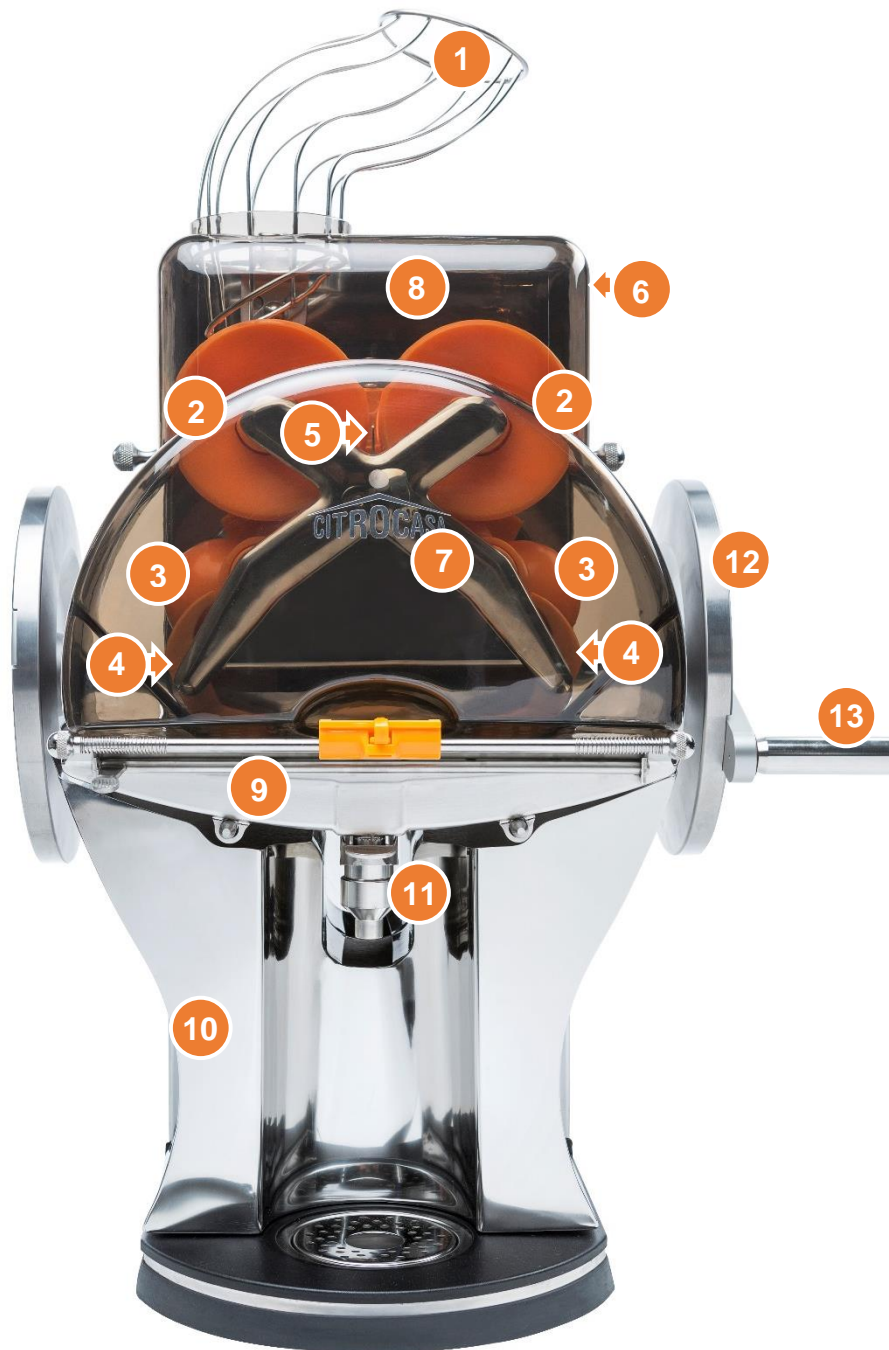
All machine parts, **except the Front Cover**, can be cleaned in the dishwasher.



We recommend cleaning the machine twice within 24 hours.

Assembling

Assemble the machine parts in reverse order. Ensure that the **lower Pressing elements** are **horizontal** and **flush** with the shaft and that the **Cross Holder** screw is **fixed tightly**. Failure to observe this may result in damage to the machine!



- | | | |
|--|------------------------------|--------------------|
| 1 Supply Tunnel | 6 Double Cover | 11 Tap |
| 2 2 x Upper Pressing elements (r & l) | 7 Crossholder | 12 Flywheel |
| 3 2 x Lower Pressing elements (r & l) | 8 Front Cover | 13 Handle |
| 4 2 x Peel Ejectors (r & l) | 9 Fruit Sieve Support | |
| 5 SCS Cutting Knife | 10 Peel Bucket | |