

Disassembling



Turn off and unplug the machine before cleaning.



Ensure that no oranges remain in the supply tunnel or beside the pressing elements.



Open the **Front Cover** fixation screws and take off the Front Cover. **CAUTION! Handwash only.**



Remove the **Cross Holder** by loosening and pulling the screw.



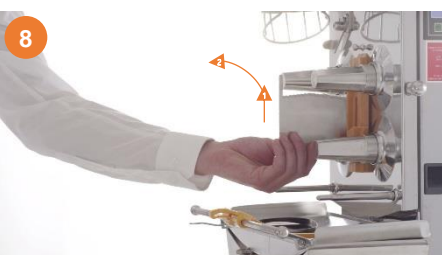
Take off the **upper pressing elements**.



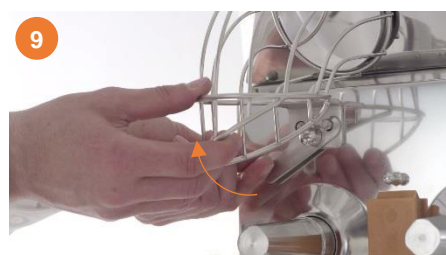
Take off the **peel ejectors**.



Take off the **lower pressing elements**.



Remove the **SCS knife** by moving it upward and pulling it off. **CAUTION! Risk of injury!**



Take off the **fruit supply tunnel** by opening the fixation lever.



Take off the **Double Cover**. Clean front with clear water and wet cloth.



Remove the complete **MTS-System** (fruit sieve, fruit sieve holder, MTS slider)



Remove the **peel bucket** from the machine.



If available remove the **bucket** below and clean the peel disposal area below the machine.

! Recommendation!

For extra thorough cleaning use XON-Forte and put the parts in the dishwasher after a few minutes of exposure.



Assembling

Assemble the machine parts in reverse order. Ensure that the **Cross Holder screw** is fixed tightly. We recommend to clean the machine twice within 24 hours.

All machine parts, except the **Front Cover**, can be cleaned in the dishwasher.





- | | |
|---------------------------------------|-----------------------|
| 1 Supply Tunnel | 6 Double Cover |
| 2 2 x Upper Pressing elements (r & l) | 7 Front Cover |
| 3 2 x Lower Pressing elements (r & l) | 8 Fruit Sieve Support |
| 4 2 x Peel Ejectors (r & l) | 9 Peel Bucket |
| 5 SCS Cutting Knife | 10 Main Switch |