

## Disassembly



1 Turn off and unplug the machine before cleaning.



2 Ensure that no fruits remain in the fruit supply tunnel and between the pressing elements.



3 Remove the peel bucket and if available the bucket below.



4 Remove the fruit sieve support and take out fine sieve and the coarse sieve out of it.



5 Open the Front Cover screws and take of the Front Cover.  
**CAUTION! Handwash only!**



6 Take off the Fruit Supply Tunnel by opening the fixation lever.



7 Remove the Cross Holder by loosening and pulling the screw.



8 Take off the upper pressing elements.



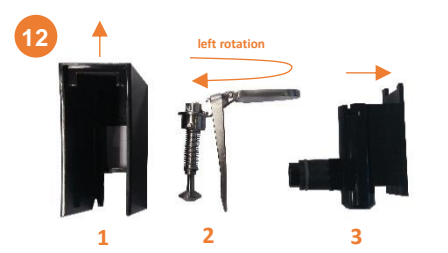
9 Remove the knife by opening the fixation flap at the top.  
**CAUTION! Risk of injury!**



10 Take off the Double Cover.



11 Remove the Trip Tray.



12 Disassemble the SB-Tap in the shown order.

### ! Attention!

All machine parts, **except the Front Cover**, can be cleaned in the dishwasher

## Assembling

Assemble the machine parts in reverse order. Ensure that the **Cross Holder screw** is fixed tightly.



- |                              |                                  |                       |
|------------------------------|----------------------------------|-----------------------|
| <b>1</b> Front Cover Screws  | <b>6</b> Cross Holder            | <b>11</b> Main Switch |
| <b>2</b> Front Cover         | <b>7</b> Upper Pressing Elements |                       |
| <b>3</b> Peel Bucket         | <b>8</b> Knife                   |                       |
| <b>4</b> Fruit Sieve Support | <b>9</b> Double Cover            |                       |
| <b>5</b> Fruit Supply Tunnel | <b>10</b> SB-Tap                 |                       |