



BA15H-I Backbar Cooler

Product features:

- Interior LED light
- Ventilated cooling
- Double glazed reversible glass door
- 2 adjustable shelves
- Adjustable feet



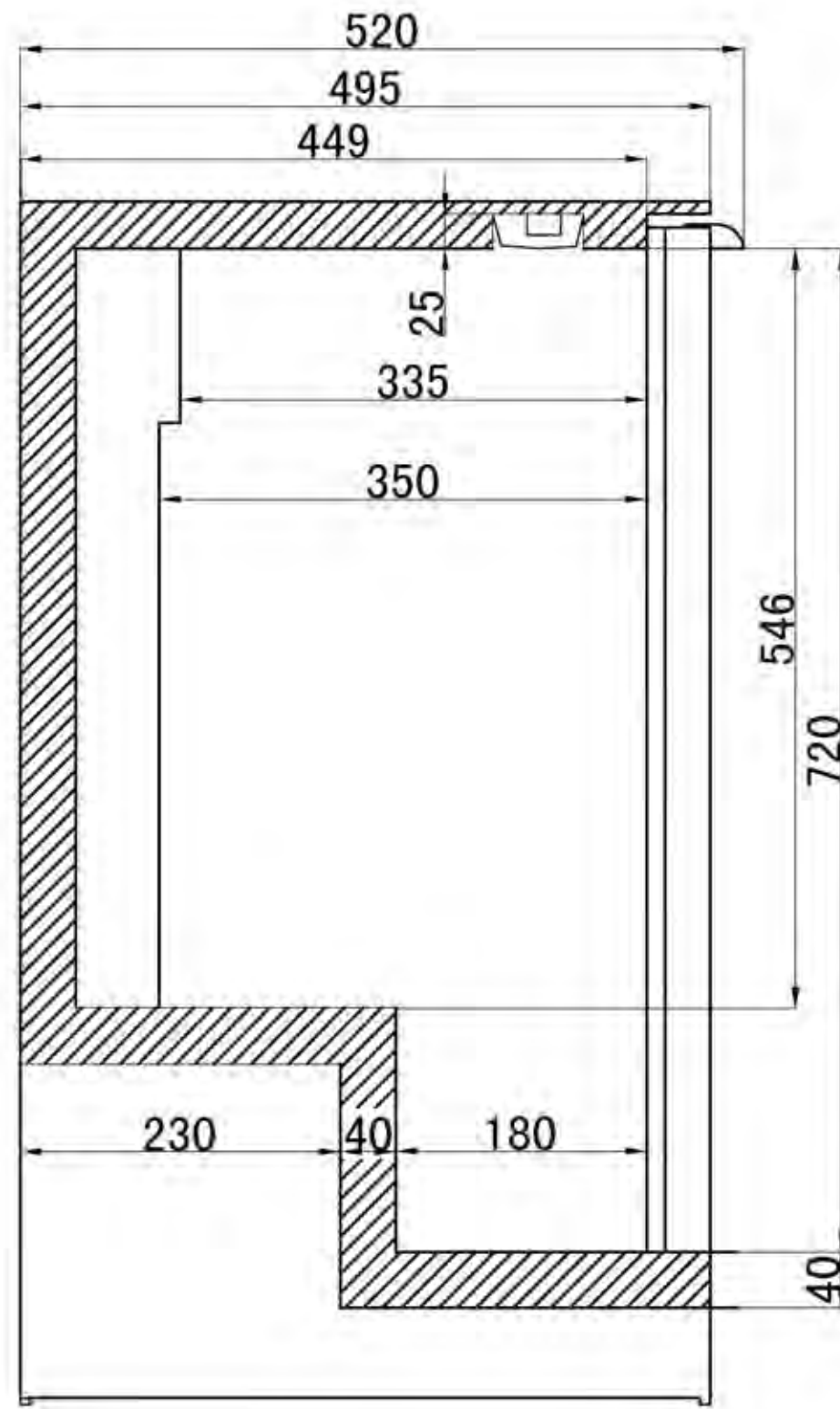
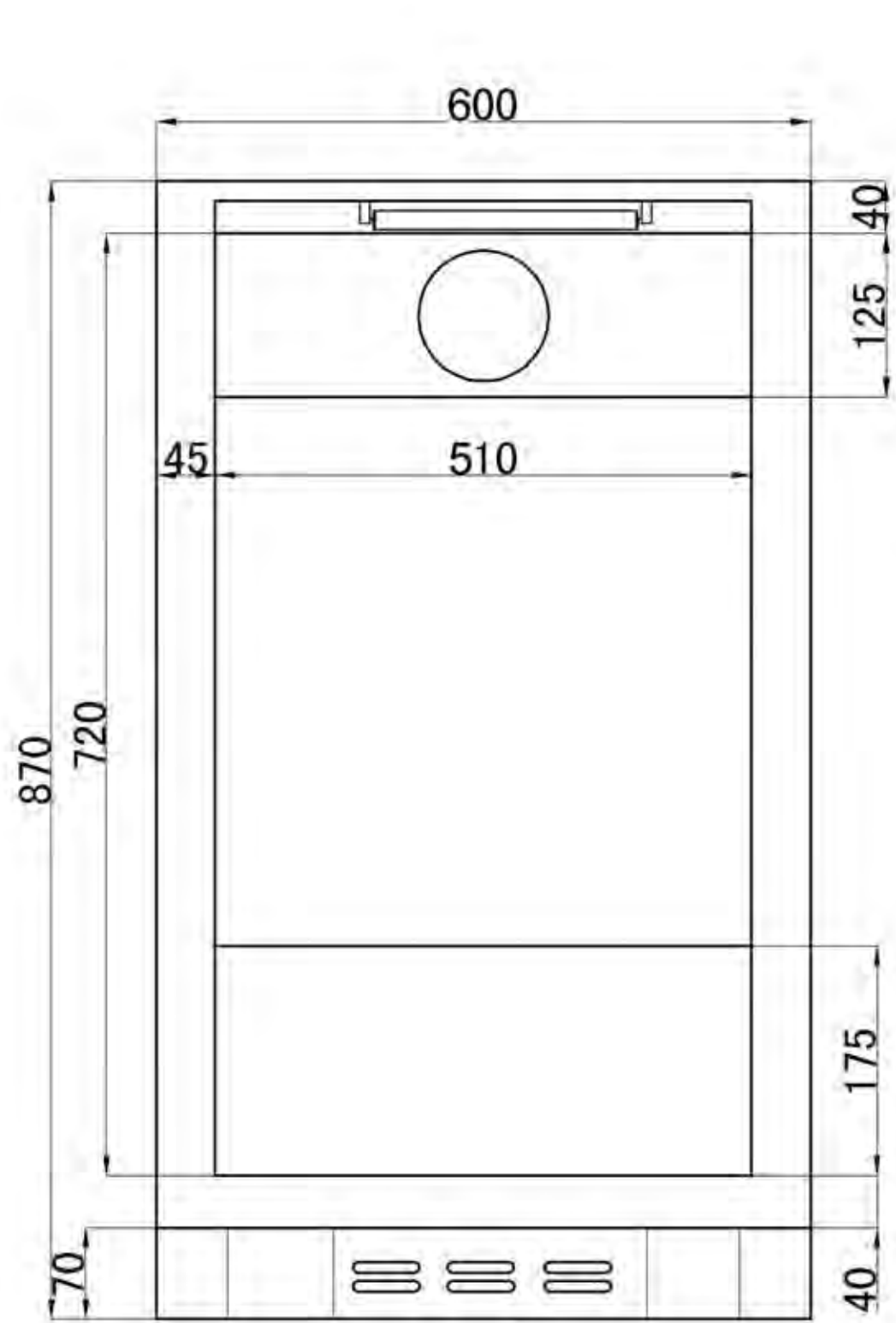
Electronic thermostat



Lock

Technical data

| | |
|------------------------------|-------------------|
| Climate Class | 4 |
| Temperature Range, °C | 2 to 10 |
| Gross Volume, l. | 122 |
| Net. Volume, l. | 116 |
| External Dimensions, WxDxH | 600x520x870 |
| Internal Dimensions, WxDxH | 508x355x720 |
| Packing Dimensions, WxDxH | 700x600x950 |
| 40'ft Container load, pcs. | 136 |
| Door | 1 hinged glass |
| Shelves | 2, 498x335 |
| Exterior | Black |
| Interior | Stucco aluminium |
| Castors/Feet | 4 adjustable feet |
| Lock | Yes |
| Voltage/Frequency, V/Hz. | 220-240/50 |
| Rated Input Power, W. | 210 |
| Energy Consumption. kWh/24h. | 2.1 |
| Gross Weight, kg. | 53 |
| Net. Weight, kg. | 45 |
| Noise Level, db(A) | 45 |
| Type of Cooling | Ventilated |
| Type of Defrost | Automatic |
| Type of Control | Electronic |
| Thermometer | Yes |
| Refrigerant | R600a |
| Charge, g. | 60 |
| Internal Light | LED |



| | |
|---|--------------|
| TEFCOLD Cool Products Worldwide | Date: 140413 |
| Model: BA15H | Rev.: 01 |
| Dimensions | Rev. by: rfj |
| Drawing no.: | |