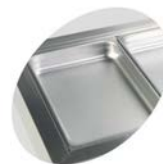




## CW3/V Cooling Well GN1/1

### Product features:

- Stainless steel 304
- Accepts GN1/1 pans (Not supplied)
- Ventilated cooling
- Electronic thermostat
- Suitable for build-in



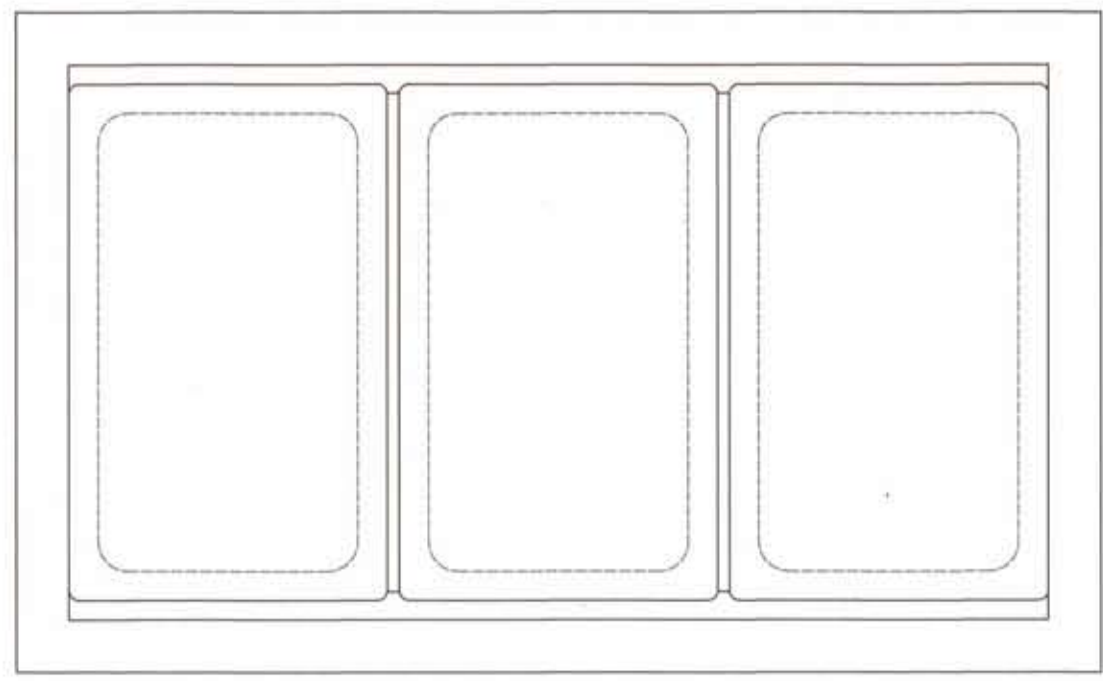
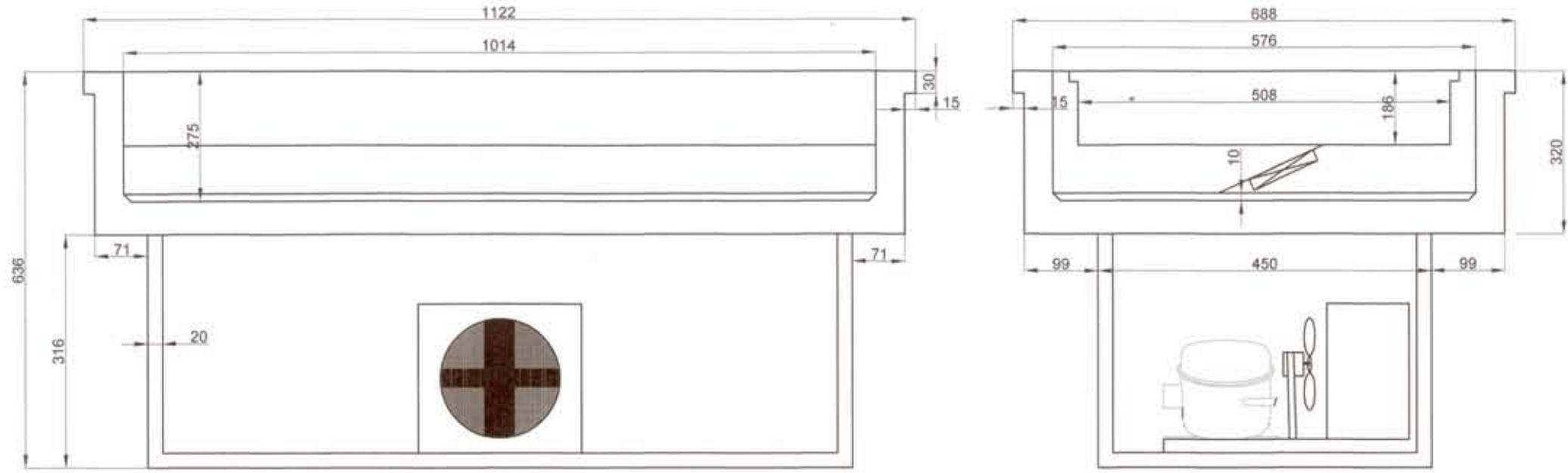
Designed for GN1/1 pans,  
not supplied



Ventilated cooling

### Technical data

Climate Class	4
Temperature Range, °C	2 to 8
Gross Volume, l.	166
Net. Volume, l.	164
Capacity, GN1/1	3
External Dimensions, WxDxH	1122x688x636
Build-in Dimensions, WxD	1090x660
Packing Dimensions, WxDxH	1176x760x742
Lid	No
Dividers	4, 520x20
Exterior	SS304
Interior	SS304
Voltage/Frequency, V/Hz.	220-240/50
Rated Input Power, W.	250
Energy Consumption. kWh/h. (Cold pans with lid)	0.16
Gross Weight, kg.	55
Net. Weight, kg.	52
Noise Level, db(A)	42
Type of Cooling	Ventilated
Type of Defrost	Automatic
Type of Control	Electronic
Thermometer	Yes
Refrigerant	R134a
Charge, g.	170



<b>TEFCOLD</b> Cool Products Worldwide	Date: 140413
Model: CW3/V	Rev.: 01
Dimensions	Rev. by: rfj
Drawing no.:	