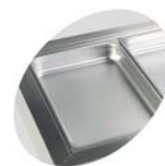


## CW3 Cooling Well GN1/1



### Product features:

- Stainless steel 304
- Accepts GN1/1 pans (Not supplied)
- Static cooling
- Electronic thermostat
- Suitable for build-in



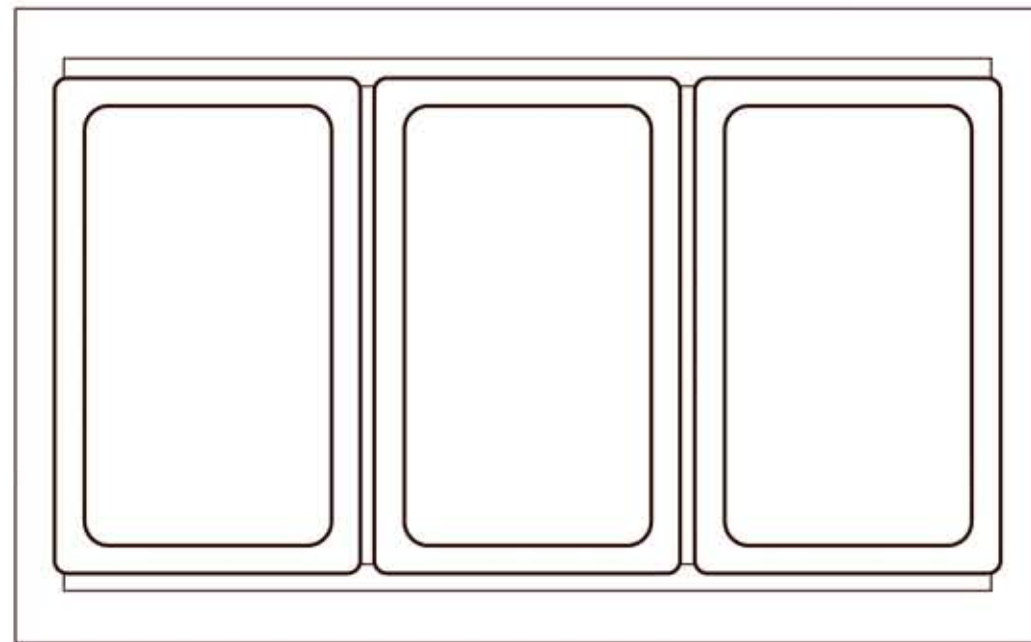
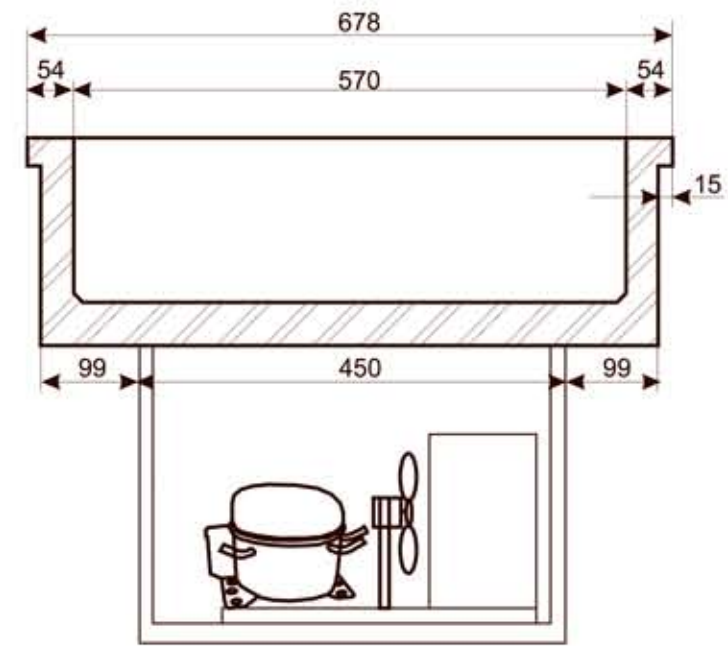
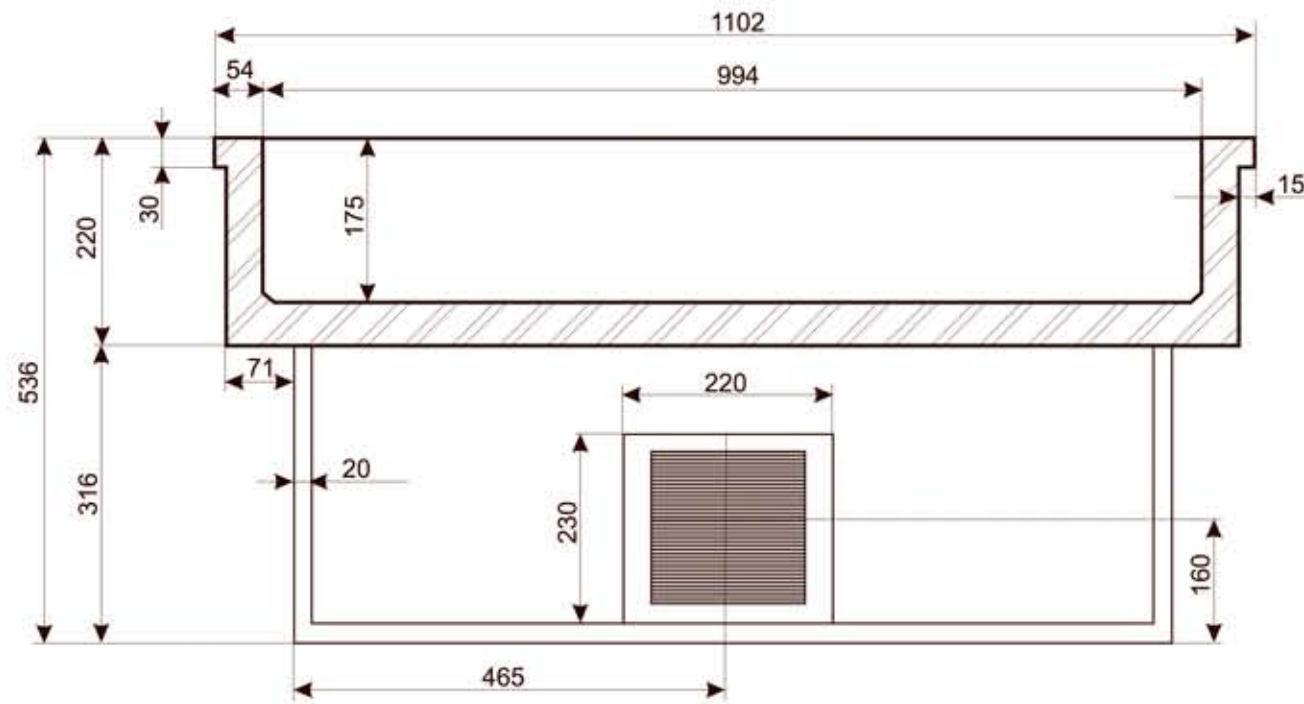
Designed for GN1/1 pans,  
not supplied



Automatic evaporation  
defrost water

### Technical data

Climate Class	4
Temperature Range, °C	2 to 8
Gross Volume, l.	104
Net. Volume, l.	102
Capacity, GN1/1	3
External Dimensions, WxDxH	1102x678x536
Build-in Dimensions, WxD	1075x650
Packing Dimensions, WxDxH	1150x730x680
40'ft Container load, pcs.	96
Lid	No
Dividers	4, 520x20
Exterior	SS304
Interior	SS304
Voltage/Frequency, V/Hz.	220-240/50
Rated Input Power, W.	250
Energy Consumption. kWh/h. (Cold pans with lid)	0.12
Gross Weight, kg.	55
Net. Weight, kg.	50
Noise Level, db(A)	42
Type of Cooling	Static
Type of Defrost	Automatic
Type of Control	Electronic
Thermometer	Yes
Refrigerant	R134a
Charge, g.	130



Cutout: 1075 x 650 mm

<b>TEFCOLD</b> Cool Products Worldwide	Date: 140413
Model: CW3	Rev.: 01
Dimensions	Rev. by: rfj
Drawing no.:	