

Specification/Data sheet

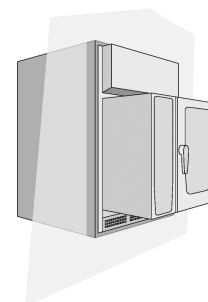
Installation kit UltraVent Plus for XS model 6 2/3



Article number: 60.74.405

Description

- For hygienic integration of a cooking system model XS 6-2/3 in a wall unit
- Integrated UltraVent Plus XS with special filter technology. Reduction of escaping steam and annoying fumes, such as those produced during grilling and roasting. Condensation diverted.
- Eliminates the need for laborious installation of separate air extraction technology
- Targeted air direction ensures necessary cooling of the unit
- Rustproof stainless steel trim kit fulfils even the most stringent hygiene requirements
- Attractive design creates a professional, harmonious overall appearance
- Prevents build-up of soilage in difficult-to-reach places
- Easy to clean



Features

- Reliably binds escaping steam and vapours thanks to the high extraction rate
- Easy-to-clean grease filter (CNS), dishwasher safe
- Proximity door contact switch
- Automatically boosts extraction rate when cooking cabinet door is opened
- Special filter technology to reduce smoke
- Rust-proof stainless steel trim kit
- Wastewater discharged by the device - no additional discharge line needed

Technical Specifications

- Connection: 230V 1 NAC 50/60 HZ
- Connected load: 155-225 W
- Air extraction rate: 280-560 m³/h
- Operating noise level is less than 67 dBA in all modes
- For wall unit interiors 700 mm wide, 950 mm high, 600 mm deep
- Certifications: VDE (IEC) EN 60335-2-99, NSF
- Weight: 30 kg

Material

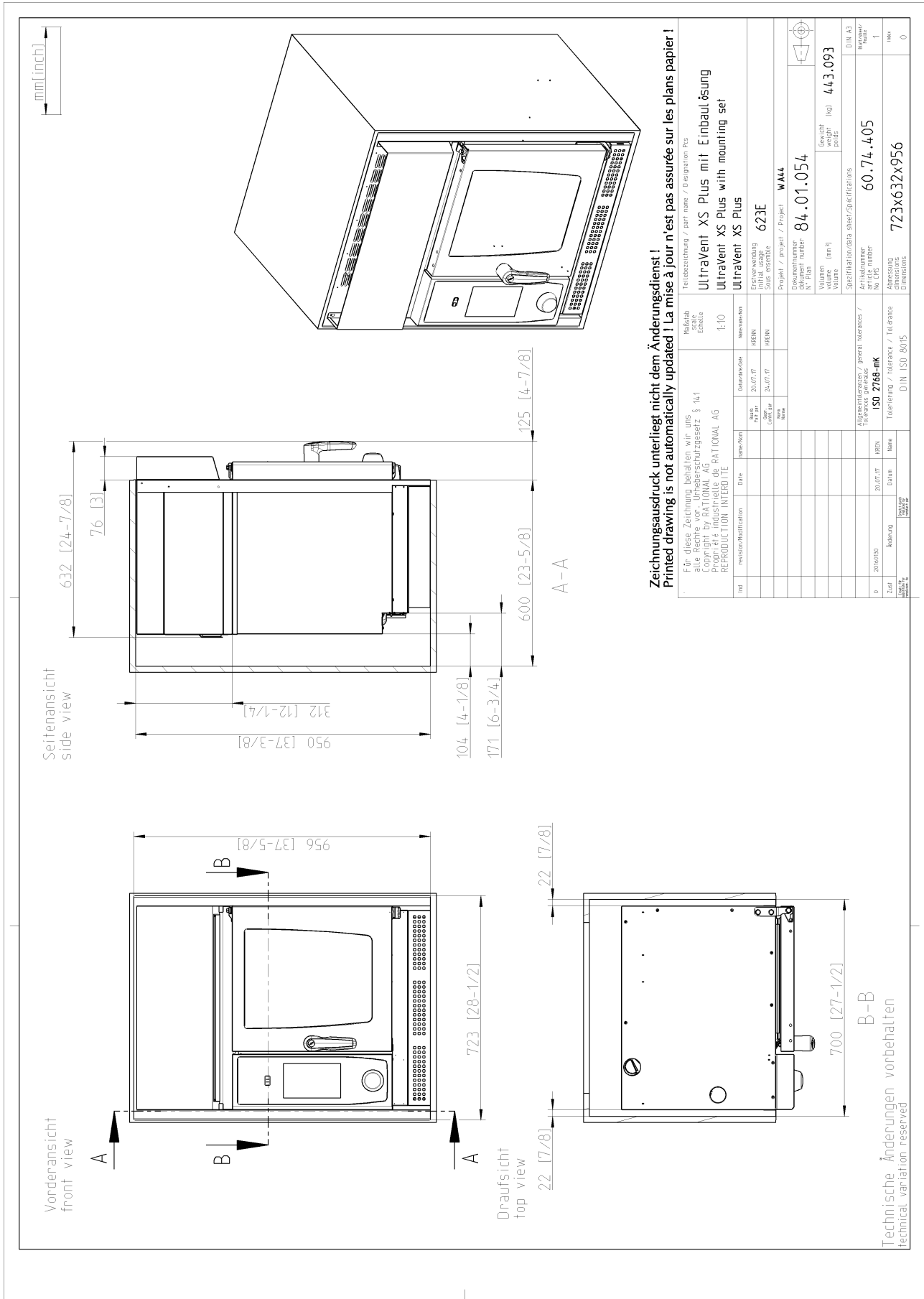
- Rust-free stainless steel (CNS 1.4301)

Note

- The local standards and regulations for ventilation systems must be adhered to
- The UltraVent Plus XS condensation hood can be used for right-sided units as well as for left-sided units. An installation option for both variants is included in the scope of delivery.

Specification/Data sheet

Installation kit UltraVent Plus for XS model 6 2/3



**Zeichnungsdruck unterliegt nicht dem Änderungsdienst !
 Printed drawing is not automatically updated ! La mise à jour n'est pas assurée sur les plans papier !**

Teilbezeichnung / part name / Désignation Pcs	UltraVent XS Plus mit Einbaulösung
Maßstab / scale / Echelle	1:10
Zeichnungsnummer / drawing number / Numéro de dessin	623E
Projektnummer / project number / Numéro de projet	WALL
Erstellung / creation / Création	623E
Gezeichnet / drawn / Dessiné	
Geprüft / checked / Vérifié	
Freigegeben / released / Libéré	
Projekt / project / Project	WALL
Zeichnungsnummer / drawing number / Numéro de dessin	84.01.054
Vollmaß / full scale / À l'échelle	
Spezifikationsblatt / specification sheet / Feuille de spécifications	
Artikelnr. / article number / Numéro de pièce	60.74.405
Abmessung / dimension / Dimension	723x632x956
Abmessung / dimension / Dimension	60.74.405
Abmessung / dimension / Dimension	723x632x956
DIN A3	0

ISO 2766-mk
 Tolerancing / tolerance / Tolérance / Tolérance
 DIN ISO 8015

Technische Änderungen vorbehalten
 Technical variation reserved