

Specification/Data sheet

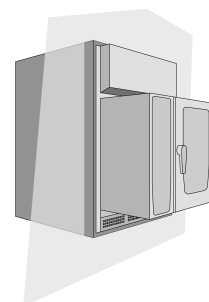
Installation kit UltraVent for model XS 6-2/3



Article number: 60.74.063

Description

- For hygienic integration of a cooking system model XS 6-2/3 in a wall unit
- Integrated UltraVent XS traps escaping fumes, diverts condensation
- Eliminates the need for laborious installation of separate air extraction technology
- Targeted air direction ensures necessary cooling of the unit
- Rustproof stainless steel trim kit fulfils even the most stringent hygiene requirements
- Attractive design creates a professional, harmonious overall appearance
- Prevents build-up of soilage in difficult-to-reach places
- Easy to clean



Features

- Reliably binds escaping steam and vapours thanks to the high extraction rate
- Easy-to-clean grease filter (CNS), dishwasher safe
- Proximity door contact switch
- Automatically boosts extraction rate when cooking cabinet door is opened
- Wastewater discharged by the device - no additional discharge line needed
- Rust-proof stainless steel trim kit

Technical Specifications

- Connection: 230V 1 NAC 50/60 HZ
- Connected load: 155-225 W
- Air extraction rate: 280-560 m³/h
- Operating noise level 1: 52 dBA
- Operating noise level 2: 67 dBA
- For wall unit interiors 700 mm wide, 950 mm high, 600 mm deep
- Certifications: VDE (IEC) EN 60335-2-99, NSF, RCM, EMC
- Weight: 25.5 kg

Material

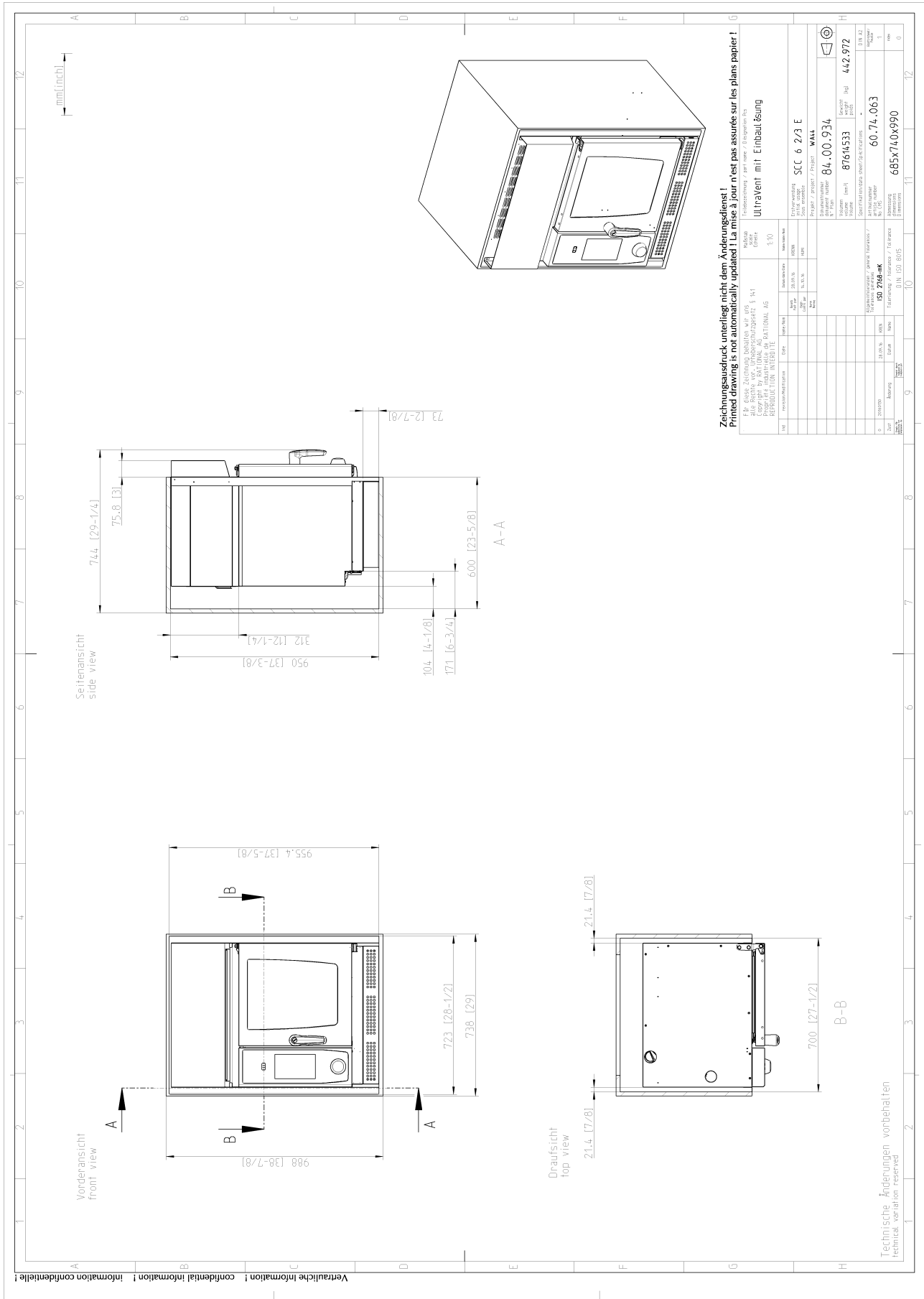
- Rust-free stainless steel 1.4301

Note

- The local standards and regulations for ventilation systems must be adhered to
- The UltraVent XS condensation hood can be used for right-sided units as well as for left-sided units. An installation option for both variants is included in the scope of delivery.

Specification/Data sheet

Installation kit UltraVent for model XS 6-2/3



Zichnungsausdruck unterliegt nicht dem Änderungsdienst!
Printed drawing is not automatically updated! La mise à jour n'est pas assurée sur les plans papier!

Für diese Zeichnung behalten wir uns alle Rechte vor. Änderungen vorbehalten. / For this drawing we reserve all rights. Technical variations reserved.

Projektnummer / Project no.: 84.00.934
 Zeichnungsnummer / Drawing no.: 442.972
 Version / Version: 87614533
 Artikelnummer / Part no.: 60.74.063
 Zeichnungsdatum / Drawing date: 685x740x990

Typ	Bezeichnung	Material	Maße	Werte
1	Einbauelement	Stahlblech	1200x600	1,5
2	Einbauelement	Stahlblech	1200x600	1,5
3	Einbauelement	Stahlblech	1200x600	1,5
4	Einbauelement	Stahlblech	1200x600	1,5
5	Einbauelement	Stahlblech	1200x600	1,5
6	Einbauelement	Stahlblech	1200x600	1,5
7	Einbauelement	Stahlblech	1200x600	1,5
8	Einbauelement	Stahlblech	1200x600	1,5
9	Einbauelement	Stahlblech	1200x600	1,5
10	Einbauelement	Stahlblech	1200x600	1,5
11	Einbauelement	Stahlblech	1200x600	1,5
12	Einbauelement	Stahlblech	1200x600	1,5