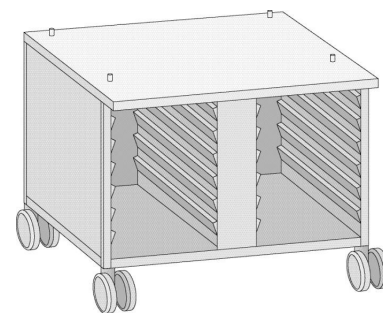


Cabinet US 3 type 61/101 - Mobile

Article number: 60.30.335

Description

- Hygiene version
- 14 Rails
- Rail distance 65 mm
- Free space from lowest rack to the bottom plate 57 mm
- With top panel, side panels, intermediate bottom, deep-drawn shelf rests
- Adjustable feet
- Deep-drawn beaded side panels
- Weight 37 kg
- 846(33-1/4) mm(inch)W x 780(30-3/4) mm(inch)D x 676(26-5/8) mm(inch)H



Difference to standard

- 4 Tandem steering casters (2 with brake - metal parts CNS)

Capacity (GN-container/grids)

- 1/1 GN Grid x 14
- 1/1 GN 20 mm deep x 14
- 1/1 GN 40 mm deep x 14
- 1/1 GN 65 mm deep x 13
- 1/1 GN 100 mm deep x 8
- Use of other containers 1/3 GN, 1/2 GN, steam pans 12" x 20", hotel pans 13" x 18" (2/3 GN, 1/4 GN crosswise)

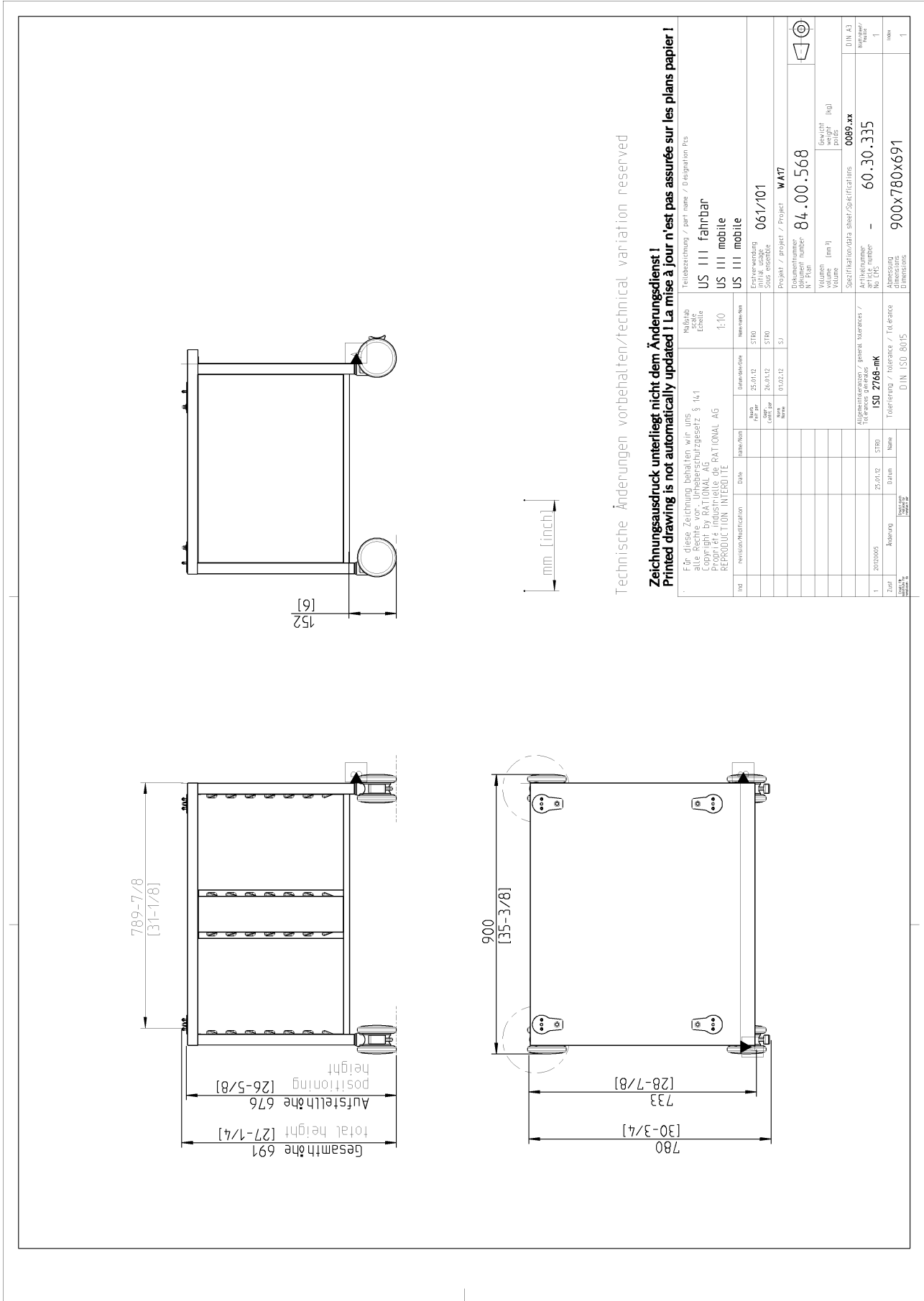
Material

- CNS 1.4301 (CNS 304)

Hint

- To be delivered with fastening kit for mounting the unit on the cabinet

Cabinet US 3 type 61/101 - Mobile



Technische Änderungen vorbehalten/technical variation reserved

Zeichnungsdruck unterliegt nicht dem Änderungsdienst!
Printed drawing is not automatically updated! La mise à jour n'est pas assurée sur les plans papier!

nd	revision/modification	Date	Interaktion	Revision	Entwickler/Designer	Geprüft/Checked	Freigegeben/Released
1	2015005	25.01.12	STRO				
		01.02.12	SJ				
		26.01.12	STRO				
		25.01.12	STRO				

Beschriftung/Label		Material/Material	
Teilbezeichnung / part name / Désignation Pcs	US III fahrbar	Material / Material	
Maßstab / Scale	US III mobile	Werkstoff / Material	
Vergrößerung / Magnification	1:10	Druck / Print	
Projekt / project / Project	061/101	Gezeichnet / Drawn	
Engineering drawing number	84.00.568	Geprüft / Checked	
Volume (mm ³)		Freigegeben / Released	
Dokumentnummer / document number	0089.00	DIN A3 Blatt / Sheet	1
Weight (kg)	60.30.335	Ausschnitt / Cut	1000
Spezifikation / Specification	ISO 2766-mk	Blatt / Sheet	1
Abmessung / Dimension	900x780x691	DIN A3 Blatt / Sheet	1