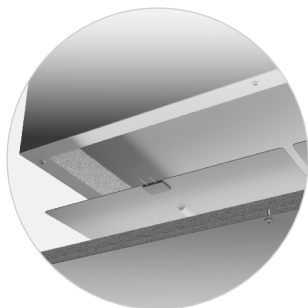
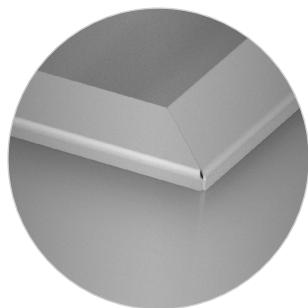


| Length L, mm | Model | | | | Cut out (mm) |
|--------------|----------------|--|--|--|--------------|
| 395 | UWM1-40/60/28 | | | | 375 x 580 |
| 740 | UWM2-74/60/28 | | | | 720 x 580 |
| 1080 | UWM3-108/60/28 | | | | 1060 x 580 |
| 1425 | UWM4-143/60/28 | | | | 1405 x 580 |

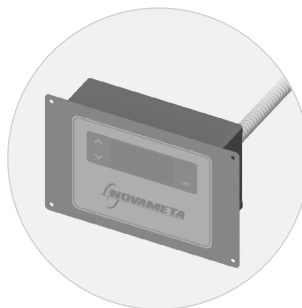
| Model: | UWM1 | UWM2 | UWM3 | UWM4 |
|----------------------|-------------------|-------------|-------------|-------------|
| Working temperature: | +30 ... +85 | +30 ... +85 | +30 ... +85 | +30 ... +85 |
| Input: | 3,3 A | 6,5 A | 9,8 A | 13 A |
| Power: | 750 W | 1500 W | 2250 W | 3000 W |
| Voltage/frequencies: | 230-240 V / 50 Hz | | | |
| Operating type: | Static | | | |
| GN: | 1 GN1/1 | 2 GN1/1 | 3 GN1/1 | 4 GN1/1 |



Easy service and efficient thermal insulation construction



DROP-IN (easily fits on table top)



Remote control
Easy-to-clean digital controller with adjustable temperature (+30 ... +85 °C)



Condensate evaporator pan