

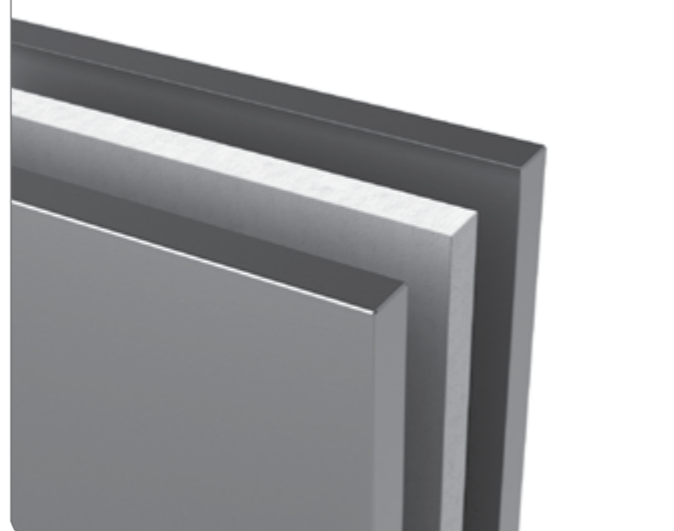
LENGTH L, mm	WIDTH B, mm	
	600 Model	700 Model
500	CPV4-50/60/200	CPV4-50/70/200
600	CPV4-60/60/200	CPV4-60/70/200
700	CPV4-70/60/200	CPV4-70/70/200
800	CPV4-80/60/200	CPV4-80/70/200
900	CPV4-90/60/200	CPV4-90/70/200
1000	CPV4-100/60/200	CPV4-100/70/200
1100	CPV4-110/60/200	CPV4-110/70/200
1200	CPV4-120/60/200	CPV4-120/70/200

1 door

2 doors

## STANDARD FEATURES

### TRIPLE LAYER SOUNDPROOF DOORS



Easy to change height of the shelf



Integrated door handles



Adjustable stainless steel feet  
(amplitude 65 mm)

## ACCESSORIES



**Lock**  
Code: K-FUDA



**AISI 304 combined with other steels**  
Code: Eco Steel

Customised equipment is available. Examples on last pages.