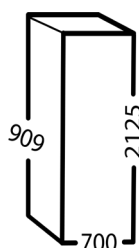


2/1 GN



Maxi C700 Refrigerator with extended refrigeration

Item number: 947010120

Maxi C700 is an energy efficient, durable, and reliable refrigerator in the deep GN-measure build for demanding professional use with many door openings and high demands for temperature stability.

WORK ENVIRONMENT, CLEANING AND EFFICIENT USE

The cabinet is equipped with a reversible door with a pedal door opener for hands-free opening, self-closing, and an integrated handle in the full height of the door. It is constructed with rounded corners and the door has a removable sealing strip for easy and efficient cleaning.

SUSTAINABILITY

Besides being energy efficient and thus having low operational costs, the cabinet is produced locally in Denmark with focus on minimizing the impact of the environment, social responsibility and with energy from renewable energy sources.

SECURITY

The cabinet comes with up to 5 years warranty, and it has a ventilated cooling system, which ensures good temperature stability and air distribution, and that the temperature is quickly restored after door openings.

WHAT IS G+?

G+ is Gram Professional ApS's brand for professional refrigeration and freezer products for food storage.

'G' symbolizes that we have roots in the Danish Gram Group.

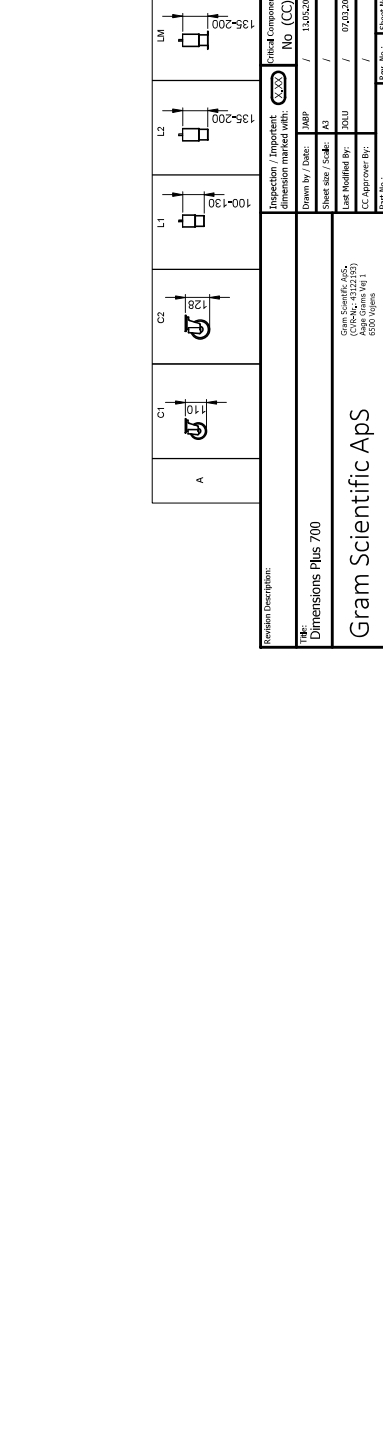
'+' symbolizes that innovation is a part of our DNA and that we continuously develop, so that we always live up to the customers' needs and expectations.



**MADE IN
DENMARK**

TECHNICAL SPECIFICATIONS

Product name	C700 G S RA L2 4N	Energy efficiency class / EEI	A / 23,5
Product type	Professional refrigerator 2/1 GN deep	Energy consumption (kWh/year)	318 kWh
Temperature range	-5/+12°C	Sound level	46,6 dB(A)
Volume (gross / net)	610 / 451 L	Warranty	Up to 5 years
Dimensions (WxDxH)	700x909x2125 mm	Climate class	5 (40°C/40% RH)
Material (exterior / interior)	Stainless steel / Stainless steel	Door type	Isolated door
Gross weight	136 kg	Legs	H = 135/200 mm
Refrigerant / charge	R600a / 0,069 kg	Number of shelves (max. number)	4 / (27) - GN-measure 530x650 mm (WxD)
GWP and Co2 equivalent	3 / 0,000207 t	Equipped with	Right-hand reversible door with lock, self-closing, pedal door opener, 4 grey wire shelves and LED lighting.
Refrigeration capacity at -10°C	260 W	Variation options	Door (left- or right-hand), wire shelves (grey/stainless), castors instead of legs.
Connection	230 V, 50 Hz / 0,65A		
Connection load	144 W		

[illegible]