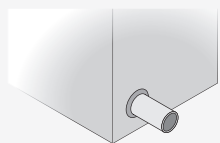
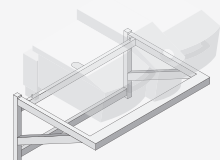


Installation



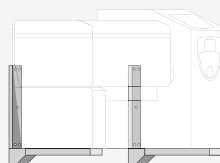
Kit for back drain

Model 112	N°: 60.71.915
-----------	---------------



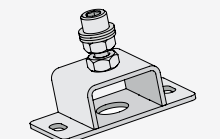
Wall suspension model 112T

Model 112T	N°: 60.73.930
------------	---------------



Kit for wall suspension

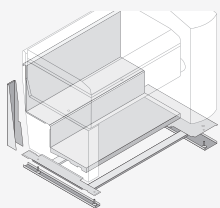
Model 211, 311	N°: 12.00.751
----------------	---------------



Kit for mounting on a plinth

Recommended in combination with the kit for back drain 60.71.915

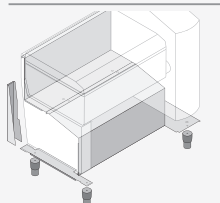
Model 112	N°: 12.00.706
-----------	---------------



Kit for mounting on a plinth

Model 211	N°: 60.30.919
-----------	---------------

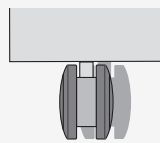
Model 311	N°: 60.30.920
-----------	---------------



Body kit

Model 211	N°: 60.30.916
-----------	---------------

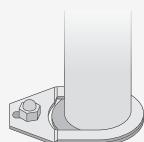
Model 311	N°: 60.30.917
-----------	---------------



Kit for mounting on casters

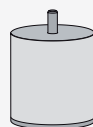
Kit for mounting on casters, 2 casters with brakes.

Model 112, 211, 311	N°: 60.71.267
---------------------	---------------



Kit for floor fastening

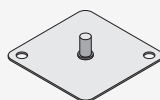
Model 112, 211, 311	N°: 60.72.905
---------------------	---------------



Kit for raising unit height

Raises unit 100 mm for feet or wheels

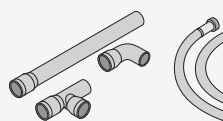
Model 112, 211, 311	N°: 60.72.341
---------------------	---------------



Base Fixing Kit

To fix the appliance onto an existing work surface.

Model 112T, 112L	N°: 60.73.501
------------------	---------------



Water connection kit

To connect water and drain

Model 112T, 112L

Cold water and drain N°: 87.00.609

Model 112, 211, 311

Cold water and drain N°: 87.00.174

Cold water, hot water N°: 87.00.545 and drain
