

## Specifications/data sheets

### Kit for mounting on a plinth model 112

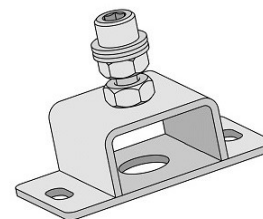
---

**Article number:**

12.00.706

**Features:**

- The 112 base frame kit allows optimal installation of the VarioCookingCenter® on a base. This replaces the standard feet supplied with the appliance.
- It is recommended that the unit drain be moved to the back. To do this, use the "rear drain" conversion kit (art. no. 60.71.915).

**Technical data:**

- Scope of delivery: 4 unit feet for base (the appliance panelling is not included).
- Dimensions: 92 mm x 50 mm x 77 mm
- Material: stainless steel
- Weight: 1 kg

**Additional accessories:**

- 60.71.915 - kit for back drain model 112

## Specifications/data sheets

### Kit for mounting on a plinth model 112

---

