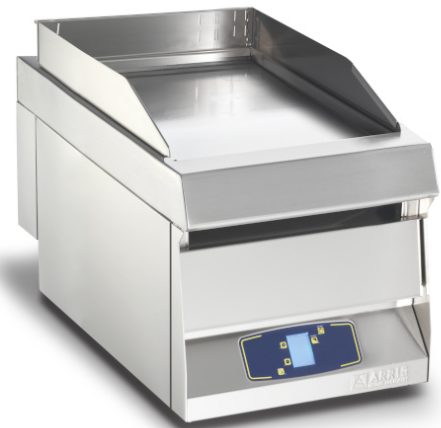


The peculiarity of Arris Fry-top Green Energy is due to thermal inertia, which is conveyed to the cooking surface by the heating elements. The heating elements, once heated up, only consume the amount of energy necessary to stay on the selected temperature. Our special technology allows the griddle to have a 25%-30% lower maximum consumption in comparison to an appliance with the same dimensions in the market. Thanks to the particular composition of the materials and to the thermal characteristics, it is even possible to have an energy saving up to 50% (in comparison to an appliance with the same dimensions in the market) can be reached when the grill is heated up.

Even though the Fry Top green Energy consumes little energy, it is able to reach very high temperatures, with a maximum temperature of around 300°C. Instrument of high quality that pays for itself, thanks to energy savings that don't compromise performance.

FT 407 EL TOP

Digital electric countertop griddle of 40 by 70 cm with energy savings technology. Special construction and technology leading to energy saving while reaching temperatures of around 300°C. The FT 407 EL TOP is part of the Fry Top Green Energy line, designed to pay itself back in energy savings in a short amount of time.



Product Dimensions (LxPxH in mm)	420, 700, 400
Hob dimensions (mm)	340x510
Voltage	380 - 415 V 3N - 50/60 Hz 220 - 240V 3 - 50/60Hz
Electric Power (kw)	2.8
Gas Power (kw)	-
Consumption methane (mc/h - LPG kh/h)	-
Gross Weight (kg)	50
Packaging volume (m ³)	0.26
Construction	Stainless steel
Water connection	-
Loading Water	-
Heart Probe	Optional