

robot coupe®



Blixer® 5 Plus • Blixer® 5 V.V. • Blixer® 6 • Blixer® 6 V.V.

robot  ***coupe***®

OPERATING INSTRUCTIONS

We reserve the right to alter at any time without notice the technical specifications of this appliance.
None of the information contained in this document is of a contractual nature. Modifications may be made at any time.
© All rights reserved for all countries by: ROBOT-COUBE s.n.c.

SUMMARY

■ WARRANTY

■ IMPORTANT WARNING

■ INTRODUCTION TO YOUR NEW EMULSIFIER-MIXER BLIXER[®] 5 Plus • BLIXER[®] 5 V.V. BLIXER[®] 6 • BLIXER[®] 6 V.V.

■ SWITCHING ON THE MACHINE

- Advice on electrical connections
- Control panel

■ ASSEMBLY

■ USES AND EXAMPLES

■ HYGIENE

■ CLEANING

- Motor Base
- Bowl
- Blade
- Scraper arm

■ MAINTENANCE

- Blade
- Scraper arm
- Motor seal

■ TECHNICAL SPECIFICATIONS

- Weight
- Dimensions
- Working height
- Noise level
- Electrical data

■ SAFETY

■ STANDARDS

■ TECHNICAL DATA (page 13)

- Exploded views
- Electrical and wiring diagrams

ROBOT-COUCPE S.N.C., LIMITED WARRANTY

Your new ROBOT-COUCPE appliance is warranted to the original buyer for a period of one year from the date of sale if you bought it from ROBOT-COUCPE S.N.C.

If you bought your ROBOT-COUCPE product from a distributor your product is covered by your distributor's warranty (Please check with your distributor terms and conditions of the warranty).

The ROBOT-COUCPE S.N.C. limited warranty is against defects in material and/or workmanship.

THE FOLLOWING ARE NOT COVERED BY THE ROBOT-COUCPE S.N.C. WARRANTY:

1 - Damage caused by abuse, misuse, dropping, or other similar damage caused by or resulting from failure to follow assembly, operating, cleaning, user maintenance or storage instructions.

2 - Labour to sharpen and/ or replacements for blades which have become blunt, chipped or worn after a normal or excessive period of use.

3 - Materials or labour to replace or repair scratched, stained, chipped, pitted, dented or discoloured surfaces, blades, knives, attachments or accessories.

4 - Any alteration, addition or repair that has not been carried out by the company or an approved service agency.

5 - Transportation of the appliance to or from an approved service agency.

6 - Labour charges to install or test new attachments or accessories (i.e., bowls, discs, blades, attachments) which have been arbitrarily replaced.

7 - The cost of changing direction-of-rotation of three-phase electric motors (Installer is responsible).

8 - SHIPPING DAMAGES. Visible and latent defects are the responsibility of the freight carrier. The consignee must inform the carrier and consignee immediately, or upon discovery in the case of latent defects.

KEEP ALL ORIGINAL CONTAINERS AND PACKING MATERIALS FOR CARRIER INSPECTION.

Neither ROBOT-COUCPE S.N.C. nor its affiliated companies or any of its distributors, directors, agents, employees, or insurers will be liable for indirect damage, losses, or expenses linked to the appliance or the inability to use it.

The ROBOT-COUCPE S.N.C. warranty is given expressly and in lieu of all other warranties, expressed or implied, for merchantability and for fitness toward a particular purpose and constitutes the only warranty made by ROBOT-COUCPE S.N.C. France.

RECOMMENDATIONS CONCERNING THE INSTALLATION OF VARIABLE-SPEED APPLIANCES AND PERSONAL SAFETY

These recommendations apply to machines equipped with an induction motor and a single-phase wobbulator.

NB :

- *The electrical circuit and the protective devices must comply with national regulations.*
- *The machine must be wired in by a qualified electrician*

Protecting your appliance

- Like all electronic devices, wobblators include components that are sensitive to electrostatic discharges (ESDs). Before conducting any work on these wobblators, technicians must therefore rid themselves of electrostatic charges.
- The machine must be disconnected from the mains supply before any internal connection operations are carried out.
- Repeatedly switching on the appliance will cause the wobbulator to overload and may result in its destruction. After the machine has been switched off, you must wait for 3 minutes before switching it back on again.

Wiring


- The appliance requires single-phase* current as far as the wobbulator, which turns the latter into variable-speed three-phase current to supply the motor.

- You must connect the machine to a 200-240 V / 50 or 60 Hz single-phase* alternating current supply with an earthed socket. A higher voltage will destroy the wobbulator.
- The earthed socket ensures operator safety.

Circuit interrupters ensuring user safety

Ground fault circuit interrupters (GFCIs) intended for variable-speed appliances need to be selected with great care in order to ensure operator safety. GFCIs may be sensitive to alternating current (type AC), impulse current (type A) or all currents (type B).

Danger ! Wobblators feature a bridge-connected rectifier of the mains supply voltage. For this reason, in the event of an earth contact, a continuous fault current may fail to trip a differential circuit breaker that is only sensitive to alternating current (type AC).

As the appliance has a single-phase* supply, it is therefore advisable to use a GFCI that is sensitive to impulse current (type A), identified by the following symbol : .

Caution : *these GFCIs may go under different names, according to the manufacturer.*

Appliances with wobblators produce a fault current on the earth wire. This current may be sufficient to trip the differential circuit breaker unnecessarily. This may occur if :

- Several variable-speed appliances are connected to the same GFCI.
- The appliance produces a fault current that is above the GFCI's actual trip threshold.

Caution : *As there are manufacturing tolerances, the actual trip threshold of a GFCI will be between 50% and 100% of its theoretical nominal threshold. Should a problem arise, measure the fault current and the GFCI's actual trip threshold.*

You can begin by consulting the characteristics of your appliance in the table below :

Appliance	Mains supply	Conductor Cross-section (mm ²)	GFCI (Ph + N)	
			Gauge (A)	Threshold (mA)
BLIXER® 5 V.V. BLIXER® 6 V.V.	200 - 240V 50 or 60 Hz single-phase	2.5	B20	≥ 30

* Except for specific three-phase 200-240 V models sold in Japan.

IMPORTANT WARNING



WARNING: In order to limit accidents such as electric shocks, personal injury or fire, and in order to limit material damage due to misuse of the appliance, please read these instructions carefully and follow them strictly. Reading the operating instructions will help you get to know your appliance and enable you to use the equipment correctly. Please read these instructions in their entirety and make sure that anyone else who may use the mixer also reads them beforehand.

UNPACKING

- Carefully remove the equipment from the packaging and take out all the boxes or packets containing attachments or specific items.
- **WARNING** - some of the tools are very sharp e.g. blade, discs... etc.

INSTALLATION

- We recommend you install your machine on a perfectly stable solid base.

CONNECTION

- Always check that your mains supply corresponds to that indicated on the rating plate on the motor unit and that it can take the amperage.
- The machine must be earthed.
- With the three-phased version, always check that the blade rotates in an anti-clockwise direction.

HANDLING

- Always take care when handling the blades or discs - they are very sharp.

ASSEMBLY PROCEDURES

- Follow the various assembly procedures carefully (see page 7) and make sure that all the attachments are correctly positioned.

USE

- Never try to override the locking and safety systems.
- Never introduce any object into the container where the food is being processed.
- Never push the ingredients down with your hand.
- Do not overload the appliance.
- Never switch the appliance on while it is empty.

CLEANING

- As a precaution, always unplug your appliance before cleaning it.
- Always clean the appliance and its attachments at the end of each cycle.
- Never place the motor unit in water.
- For parts made of aluminum alloys, use cleaning fluids suitable for aluminum.

- For plastic parts, do not use detergents that are too alkaline (i.e., containing too much caustic soda or ammonia...).
- Robot-Coupe can in no way be held responsible for the user's failure to follow the basic rules of cleaning and hygiene.

MAINTENANCE

- Before opening the motor housing, it is absolutely vital unplug the appliance.
- Check the seals and washers regularly and ensure that the safety devices are in good working order.
- It is particularly important to maintain and check the attachments since certain ingredients contain corrosive agents e.g. citric acid.
- Never operate the appliance if the power cord or plug has been damaged in any way or if the appliance fails to work properly or has been damaged in any way.
- Do not hesitate to contact your local Maintenance Department if something appears to be wrong.

INTRODUCTION TO YOUR NEW EMULSIFIER-MIXER BLIXER® 5 Plus • BLIXER® 5 V.V. BLIXER® 6 • BLIXER® 6 V.V.

ROBOT-COUCPE has developed a new concept in appliance: the **BLIXER®**.

The **BLIXER®** combines the features of two well-known appliances: the cutter and the blender-mixer. The **BLIXER®** is perfectly geared to professional needs. It can perform any number of tasks which you will soon discover as you use it.

The **BLIXER®** will make it easy to prepare mixed liquid or semi-liquid, raw or cooked meals.

The **BLIXER®** replace the blender which does not give entire satisfaction because of its incapacity to process solid foods.

Thanks to its simple design, all components requiring frequent handling for maintenance or cleaning are easily fitted or removed.

To make things easier for you, this manual gives a breakdown of all the various fitting operations.

This manual contains important information designed to help the user get the most out of their device.

We therefore recommend that you read it carefully before using your machine.

SWITCHING ON THE MACHINE

• ADVICE ON ELECTRICAL CONNECTIONS

Before plugging in, check that your power supply corresponds to that indicated on the machine's identification plate.



Three phase **BLIXER® 5 Plus • BLIXER® 6**

The **BLIXER® 5 Plus** is available with the following motor ratings :

- 230 - 400 V / 50 Hz / 3
- 400 V / 50 Hz / 3
- 220 V / 60 Hz / 3
- 380 V / 60 Hz / 3

This machine is supplied with a cable to which you simply attach the appropriate electrical plug or isolator for your system. The cable has four wires, one earth wire, plus three phases wires.

If you have a 4-pin plug:

- 1) Connect the green and yellow earth wire to the earth pin.
- 2) Connect the three other wires to the remaining pins.

If you have more than 4 pins in the plug, please note the **ROBOT-COUCPE** does not require a neutral wire.

Switch on the empty machine, making sure that the blade is rotating properly in an anti-clockwise direction.

If the blade turns in a clockwise direction, swap over two wires.

**GREEN YELLOW is the earth,
DO NOT DISCONNECT**

Swap either : the ❶ and the ❷
the ❶ and the ❸
or the ❷ and the ❸

Single phase **BLIXER® 5 Plus**

The **BLIXER® 5 Plus** is available with motor ratings :
230 V / 50 Hz / 1
220 V / 60 Hz / 1

The machine comes with a single phase plug connected to a power cord.

Single phase **BLIXER® 5 V.V. • BLIXER® 6 V.V.**

The **BLIXER® 5 V.V.** and **BLIXER® 6 V.V.** are available with motor ratings + variable speed :
230 V / 50-60 Hz / 1

The standardized plug must be calibrated to a minimum of 13 amps and preferably 20 amps, if the appliance is used intensively.

• CONTROL PANEL

Red switch = Off switch

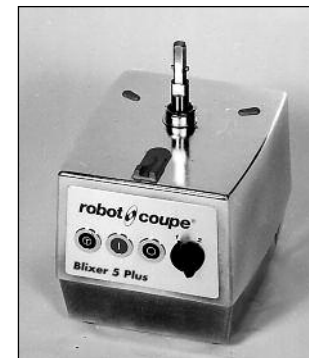
Green switch = On switch

Three phase **BLIXER® 5 Plus**, **BLIXER® 5 V.V.** and **BLIXER® 6 V.V.** : Pulse control.

Three phase **BLIXER® 5 Plus • BLIXER® 6** :
Speed selector = 1 500 or 3 000 rpm.

Single phase **BLIXER® 5 Plus** : One speed 3 000 rpm
BLIXER® 5 V.V. and **BLIXER® 6 V.V.** : Speed variation from 300 to 3 000 rpm.

ASSEMBLY



- 1) With the motor base facing you, position the cutter bowl on the motor base.

2) Turn the bowl to the right until it locks.



3) Engage the blade on the motor shaft and lower it right to the bottom of the bowl. Make sure that it is correctly positioned, by rotating it in the bowl.

4) Place the lid on the bowl and rotate to the right until it clicks.

The device is now ready for use.



USES AND EXAMPLE

The BLIXER® will enable you to perform all your cutting tasks in minimum time; we recommend therefore that you keep a close eye on the mixture in order to obtain the desired results.

HOSPITAL USES:

SPOON FEEDING

- Minced foods: meat, fish... • Vegetable purees
- Mousses: vegetables, fish... • Compotes of stewed fruit

SEMI-LIQUID FEEDING

This simply entails diluting spoon-feeding preparations:

- Minced meat + gravy • Puree + liquid (broth, milk...)
- Soups / creamed soups • Fruit compotes + syrup or water

LIQUID FEEDING (for use via tubes)

- Soups and any preparations that can be liquidized.

RESTAURANTS AND DELICATESSEN USES:

- Butter mixtures: snail butter, salmon butter, anchovie butter...
- Sauces: green sauce, mayonnaise, remoulade, ailloli, emulsify sauces with tomatoes, cream, parsley...
- Grinding: lobster, scampi, seashells...

PHARMACEUTICAL AND CHEMICAL LABORATORY USES:

- Grinding: herbs, seeds, powders, tablets....
- Mixing: homogeneization of creams, ointments, mixed components, varied ingredients...

HYGIENE

At each step of food processing, the machine and attachments must be clean.

A certain order when processing foods must be followed. In general, always try to process foods that are least likely to cause cross-contamination first, as illustrated in the following example :

- 1 - Cooked meat
 - Terrines/mousses
 - Delicatessen
 - ham
 - smoked ham
 - sausage.
- 2 - Cheese
 - hard
 - other type.
- 3 - Vegetables.

It is vital that all parts of the machine that come into contact with food are cleaned meticulously, using a detergent/sanitiser, after each processing job.

• WARNING: NEVER USE PURE BLEACH.

Always follow the detergent manufacturers instructions to make up the correct strength of solution; these are normally found on the detergent package, if in doubt contact your detergent supplier or manufacturer.

- If necessary rub well with a soft brush or cloth: NEVER use a harsh abrasive cleaning pad.
- Allow the detergent/sanitiser to work for the required length of time.
- Always rinse well.
- Dry well with a soft clean cloth. Only air dry if the detergent manufacturer recommends it.

CLEANING

⚠ WARNING

As a precaution, always unplug your appliance before cleaning it (risk of electrocution).

• MOTOR BASE

Never immerse the motor base in water. Clean using a damp cloth or sponge.

• BOWL

After removing the lid, remove the bowl from the motor base by pushing the trigger fitted in the handle. Pull up to disengage, leaving the blade in the bowl in order to prevent any spillage when working with liquids.

If the food has a solid consistency, remove the blade and empty the bowl.

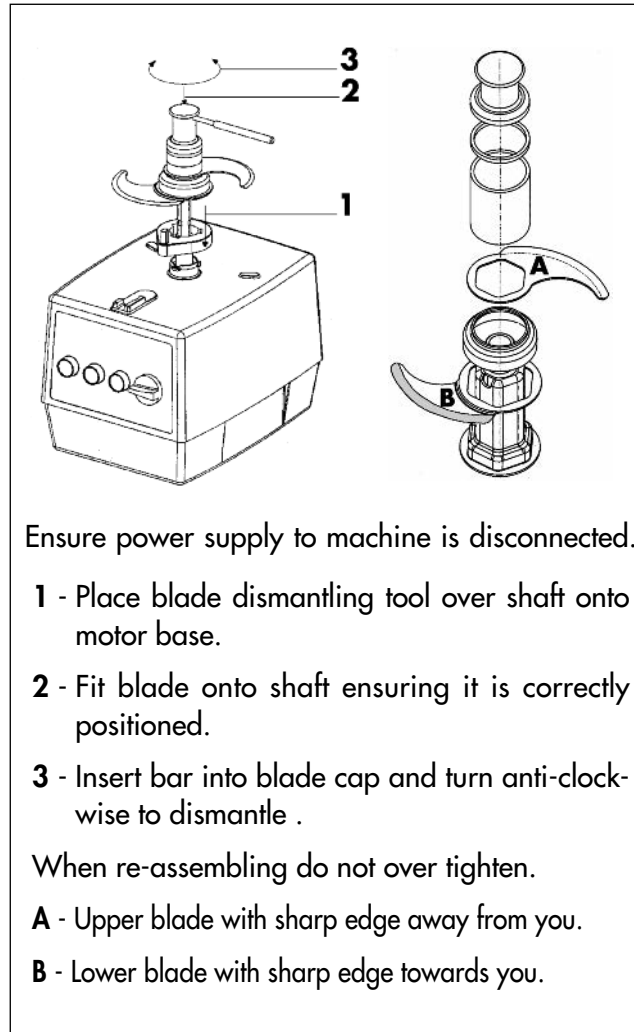
Replace the bowl, place the blade back on the shaft and switch on the machine in order to remove any mixture which may have stuck to the blade.

If you wish, you can rinse the bowl by filling it with hot water and switching on for a few minutes.

• BLADE

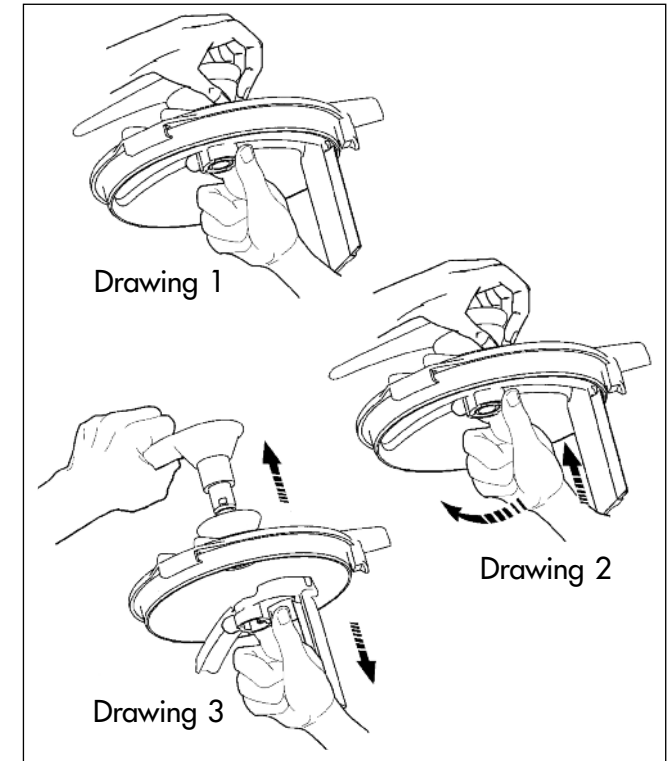
The stainless steel blade of BLIXER® 6 and BLIXER® 6 V.V. is easy to dismantle and to clean.

After cleaning the blade, always dry the blades well to prevent rusting.



• SCRAPER ARM

To clean the scraper arm, dismantle it as follows. Hold the scraper arm in one hand and the hub in the other hand (drawing1). Press the two pieces one on the other, and turn the handle of 45° anticlockwise (drawing 2). Then it is possible to pull out the two pieces (the scraper arm and the handle) from the lid and clean them (drawing 3).



⚠ IMPORTANT

Check that your detergent is suitable for cleaning plastic parts. Some washing agents are too alkaline (e.g. high levels of caustic soda or ammonia) and totally incompatible with certain types of plastic, causing them to deteriorate rapidly.

MAINTENANCE

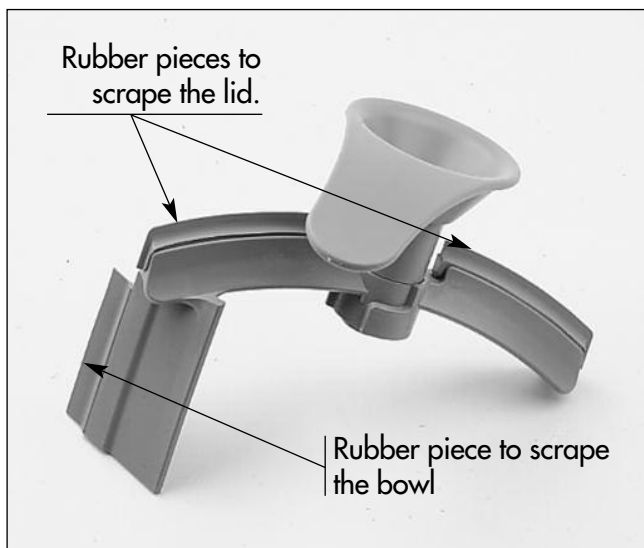
• BLADE

The quality of the cut depends mainly on the sharpness of your blades and the degree of wear. The blades are actually wearing parts, which should be replaced occasionally to ensure consistent quality in the final product.

• SCRAPER ARM

The scraper arm is equipped with rubber pieces which are wearing parts. They should be replaced occasionally to always ensure an optimum efficiency of the scraper arm.

These pieces are easy to dismantle and to reassemble.



• MOTOR SEAL

The motor seal on the shaft should be lubricated regularly using a food safe lubricant.

In order to keep the motor completely watertight, it is advisable to check the motor seal regularly for wear and tear and replace if necessary.

The motor seal can be easily replaced without having to remove the motor, so we strongly advise you to ensure that it is in good condition.

TECHNICAL SPECIFICATIONS

• WEIGHT

	net weight	gross weight
BLIXER® 5 Plus	24 kg	26 kg
BLIXER® 5 V.V.	24 kg	26 kg
BLIXER® 6	26 kg	28 kg
BLIXER® 6 V.V.	26 kg	28 kg

• DIMENSIONS (in mm)

BLIXER® 5 Plus	BLIXER® 6
A = 480	A = 520
B = 340	B = 340
C = 280	C = 280
D = 265	D = 265
BLIXER® 5 V.V.	BLIXER® 6 V.V.
A = 480	A = 520
B = 340	B = 340
C = 280	C = 280
D = 265	D = 265

• WORKING HEIGHT

We recommend that you position the machine on a stable worktop so that the upper edge of the large feed hopper is at a height of between 1.20 m and 1.30 m.

• NOISE LEVEL

The equivalent continuous sound level when the machine is operating on no-load is less than 70 db (A).

• ELECTRICAL DATA

BLIXER® 5 Plus three-phase machine

Motor	Speed 1 (rpm)	Speed 2 (rpm)	Power (watts)	Intensity (Amp.)
230-400 V / 50 Hz	1500		950	230 V=4,0 400 V=2,5
		3000	1300	230 V=7,0 400 V=4,0
400 V / 50 Hz	1500		950	2.7
		3000	1300	3.4
220 V / 60 Hz	1800		950	4.7
		3600	1300	6.5
380 V / 60 Hz	1800		950	2.5
		3600	1300	3.4

BLIXER® 5 Plus single-phase machine

Motor	Speed (rpm)	Power (watts)	Intensity (Amp.)
230 V / 50Hz	3000	1200	8.5

BLIXER® 5 V.V. single-phase machine

Motor	Speed (rpm)	Power (watts)	Intensity (Amp.)
230 V / 50-60 Hz	300 to 3000	1400	12

BLIXER® 6 three-phase machine

Motor	Speed 1 (rpm)	Speed 2 (rpm)	Power (watts)	Intensity (Amp.)
230-400 V / 50 Hz	1500		950	230 V=4,0 400 V=2,5
		3000	1300	230 V=7,0 400 V=4,0
400 V / 50 Hz	1500		950	2.7
		3000	1300	3.4

BLIXER® 6 V.V. single-phase machines

Motor	Speed (rpm)	Power (watts)	Intensity (Amp.)
230 V / 50-60 Hz	300 to 3000	1300	12

SAFETY



WARNING

**The blades are extremely sharp.
Handle with care.**

These models are fitted with a magnetic safety device and motor braking system.

As soon as you open the lid the motor stops.

To restart the machine, simply close the lid and press the green switch.

In order to avoid splashing when processing liquid preparation, we recommend you stop the machine before opening the lid.

All the models are fitted with a **thermal cut-out** which automatically stops the motor if the machine is left on for too long or overloaded.

If this happens, allow the machine to cool completely before restarting.



REMEMBER

Never try to override the locking and safety systems.

Never introduce any object into the container where the food is being processed.

Never push the ingredients down with your hand.

Do not overload the appliance.

STANDARDS

MACHINES IN COMPLIANCE WITH:

- The following European directives and related national legislation:
 - Modified "machinery" directive 2006/42/EC,
 - "Low voltage" directive 2006/95/EEC,
 - "EMC" directive 2004/108/EC,
 - "Materials and parts in food contact" directive 89/109/EEC,
 - Commission Directive 2002/72/EC of 6 August 2002 relating to plastic materials and articles intended to come into contact with foodstuffs.
- The following European harmonized standards and standards setting out health and safety rules:
 - EN 292 - 1 and - 2,
 - EN 60204 -1 (2006),
 - For Food Processors and blenders : EN 12852.

INDEXES OF PROTECTION:

- IP 55 for the switches.
- IP 34 for the machines.

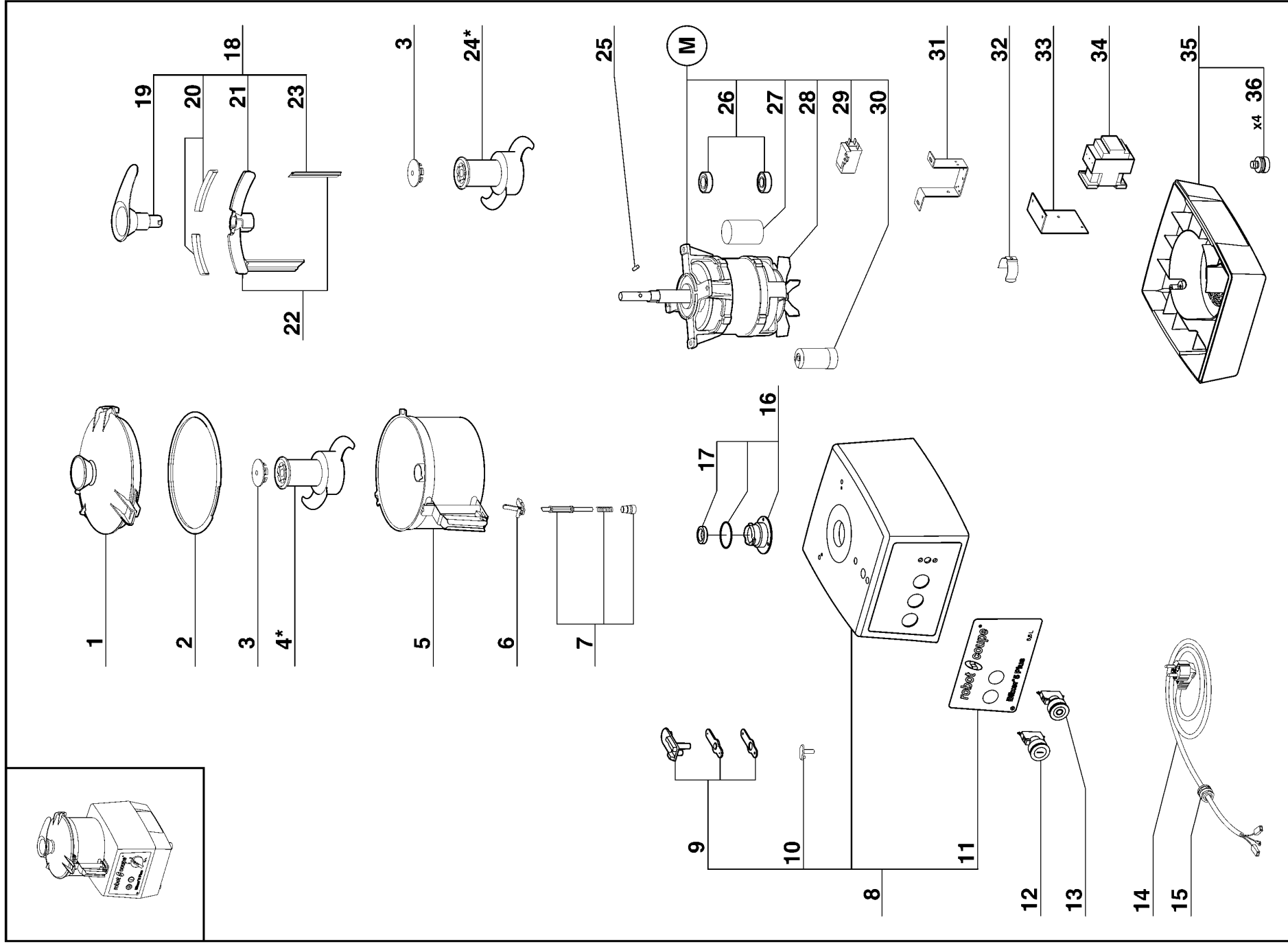
robot  ***coupe***®

TECHNICAL DATA

robotcoupe®

**BLIXER 5 A Plus
Monophasé**

N° de série / Serial number
- 138 - - - - -

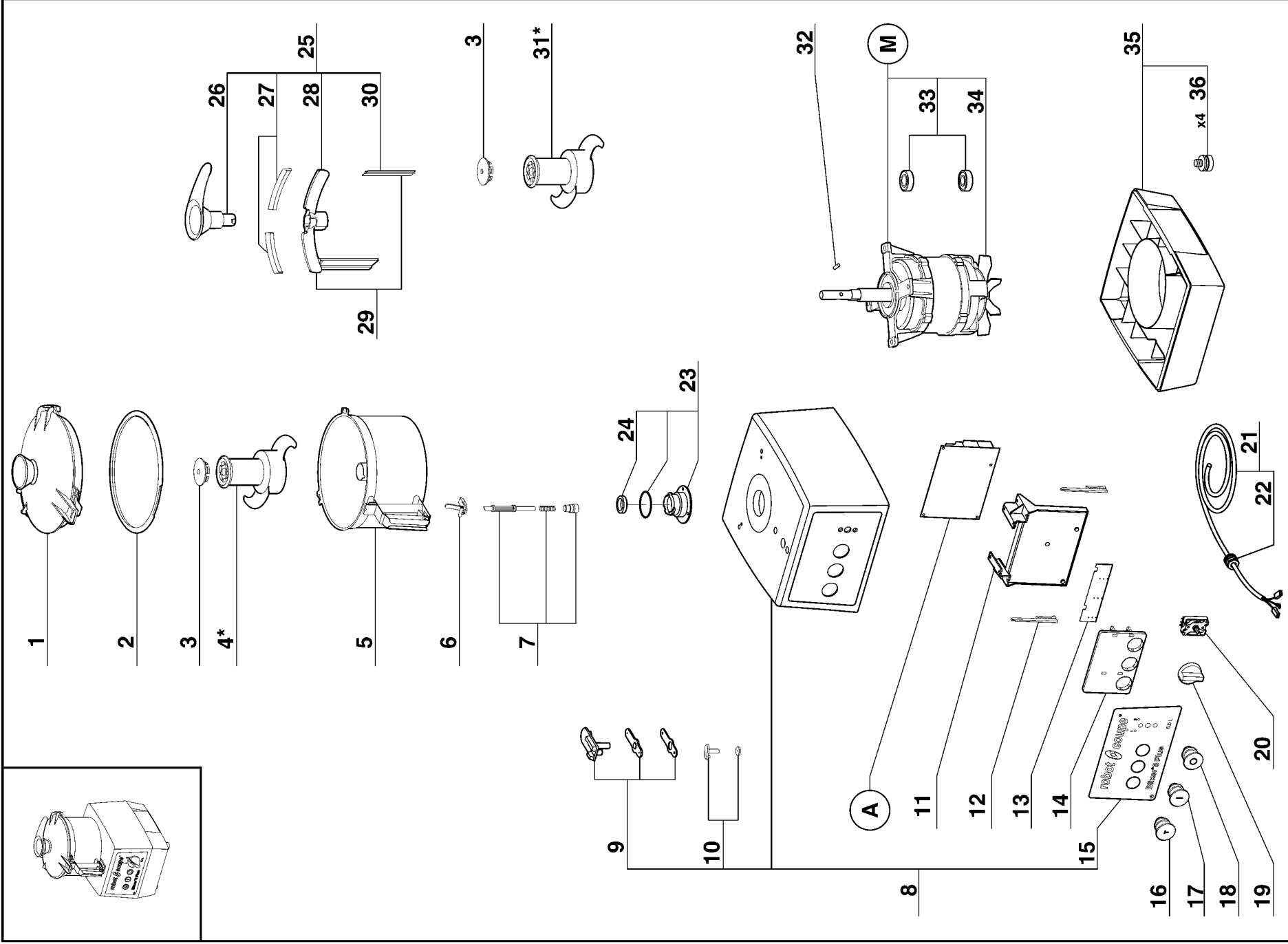


* Voir tarif machines / See export price list

Index	Pièce / Part	Désignation	Description
1	29 341	COUVERCLE CUTTER	CUTER LID
2	117 100	JOINT COUVERCLE	LID SEAL
3	117 186	BOUCHON COUTEAU	LID CAP
4*	27 155*	COUTEAU DENTE	FINE SERRATED BLADE
5	117 196	CUVE BLIXER 5	BOWL BLIXER 5
6	39 827	ENS. GACHETTE CUVE	SPRING CATCH ASSEMBLY
7	39 474	ENS. TIGE SECURITE	SAFETY ROAD ASSEMBLY
8	39 801	ENS. SUPPORT MOTEUR BLIXER 5 MONO	MOTOR SUPPORT ASSEMBLY
9	117 136	ENS. ILS CUTTER	SAFETY SWITCH ASSEMBLY
10	29 336	ENS. APPUI CUVE	BOWL SUPPORT ASSEMBLY
11	39 862	ENS. PLAQUE FRONTALE BLIXER 5 MONO	FRONT PLATE ASSEMBLY
12	502 174	BOUTON VERT AVEC BLOC CONTACT	GREEN KNOB + CONTACT BLOCK
13	502 173	BOUTON ROUGE AVEC BLOC CONTACT	RED KNOB + CONTACT BLOCK
14	503 978	CABLE D'ALIMENTATION	POWER CORD
15	515 515	PRESSE ETOUPE	STRAIN RELIEF
16	39 088	ENS. PORTE JOINT	SEAL SUPPORT ASSEMBLY
17	501 624	BAGUE D'ETANCHEITE	SEAL RING
18	29 373	ENS. BRAS RACLEUR	SCRAPPER ASSEMBLY
19	117 187	POIGNEE BRAS RACLEUR	SCRAPPER HANDLE
20	117 192	RACLEUR SUPERIEUR	UPPER SCRAPPER
21	117 653	BRAS RACLEUR BLIXER 5	SCRAPPER BLIXER 5
22	29 468	BRAS RACLEUR	SCRAPPER
23	117 651	RACLEUR VERTICAL	VERTICAL SCRAPPER
24*	27 180*	COUTEAU CRANTE	COMPLETE SERRATED BLADE
25	110 308	GOUPILLE AXE MOTEUR	MOTOR SHAFT PIN
26	39 819	ENS. ROULEMENT MOT R 502	BEARING ASSEMBLY
27	510 212	CONDENSATEUR PERMANENT	CONTINUOUS CAPACITOR
28	105 885	VENTILATEUR	FAN
29	504 127	RELAIS DE DEMARRAGE	STARTING RELAY
30	510 211	CONDENSATEUR DEMARRAGE	STARTING CAPACITOR
31	117 268	SUPPORT RELAIS	RELAY SUPPORT
32	602 261	AGRAFE CONDENSATEUR DE DEMARRAGE	STARTING CAPACITOR SUPPORT
33	118 419	SUPPORT CONTACTEUR	CONTACTOR SUPPORT
34	504 710	CONTACTEUR	CONTACTOR
35	29 620	ENS. SOCLE	BASE ASSEMBLY
36	101 418	PIED GRIS	GREY FOOT

M	MOTEUR	MOTOR
	Machine	Voltage
	33 160	220-240/50
	33 161	220/60
		M
		301 068
		301 069

* Voir tarif machines / See export price list.



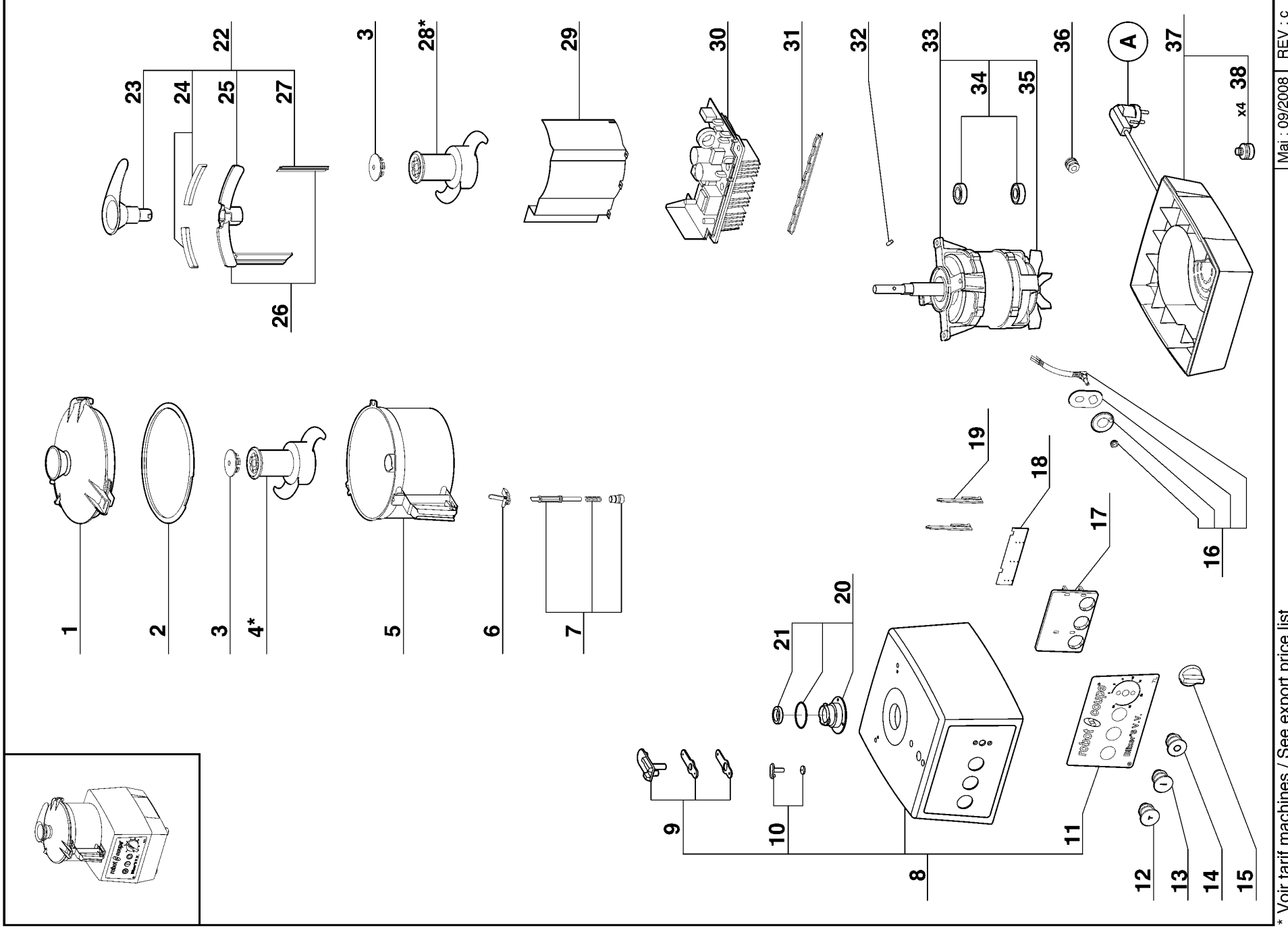
* Voir tarif machines / See export price list

Index	Pièce / Part	Désignation	Description
1	29 341	COUVERCLE CUTTER	CUTER LID
2	117 100	JOINT COUVERCLE	LID SEAL
3	117 186	BOUCHON COUTEAU	LID CAP
4*	27 155*	COUTEAU DENTE	FINE SERRATED BLADE
5	117 196	CUVE BLIXER 5	BOWL BLIXER 5
6	39 827	ENS. GACHETTE CUVE	SPRING CATCH ASSEMBLY
7	39 474	ENS. TIGE SECURITE	SAFETY ROAD ASSEMBLY
8	29 371	ENS. SUPPORT MOTEUR	MOTOR SUPPORT ASSEMBLY
9	29 586	ENS. ILS CUTTER	REED SWITCH CUTTER ASSEMBLY
10	29 336	ENS. APPUI CUVE	BOWL SUPPORT ASSEMBLY
11	117 809	SUPPORT PLATINE	CONTROL BOARD SUPPORT
12	117 703	CLAVETTE	KEY
13	117 813	CARTE BOUTON	CONTROLS PCB
14	29 533	ENS. SUPPORT PLATINE	PCB SUPPORT ASSEMBLY
15	405 590	PLAQUE FRONTALE	FRONT PLATE
16	502 171	BOUTON NOIR	BLACK KNOB
17	502 170	BOUTON VERT	GREEN KNOB
18	502 169	BOUTON ROUGE	RED KNOB
19	117 072	POIGNEE COMMUTATEUR	COMMUTATOR HANDLE
20	117 792	COMMUTATEUR	COMMUTATOR
21	515 570	CABLE D'ALIMENTATION	POWER CORD
22	515 515	PRESSE ETOUPE	STRAIN RELIEF
23	39 088	ENS. PORTE JOINT	SEAL SUPPORT ASSEMBLY
24	501 624	BAGUE D'ETANCHEITE	SEAL RING
25	29 373	ENS. BRAS RACLEUR	SCRAPPER ASSEMBLY
26	117 187	POIGNEE BRAS RACLEUR	SCRAPPER HANDLE
27	117 192	RACLEUR SUPERIEUR	UPPER SCRAPPER
28	117 653	BRAS RACLEUR BLIXER 5	SCRAPPER BLIXER 5
29	29 468	BRAS RACLEUR	SCRAPPER
30	117 651	RACLEUR VERTICAL	VERTICAL SCRAPPER
31*	27 180*	COUTEAU CRANTE	COMPLETE SERRATED BLADE
32	110 308	GOUPILLE AXE MOTEUR	MOTOR SHAFT PIN
33	39 819	ENS. ROULEMENT MOT R 502	BEARING ASSEMBLY
34	105 885	VENTILATEUR	FAN
35	29 581	ENS. SOCLE	BASE ASSEMBLY
36	39 833	PIED GRIS	GREY FOOT

A	PLATINE	POWER CIRCUIT BOARD
M	MOTEUR	MOTOR

Machine	Voltage	A	M
33 167 Jap	220/60/3	102 600	303 052
33 162			303 054
33 163	380/60/3	112 600	303 051
33 164	400/50/3		303 114
33 165	415/50/3		
33 166	230/400/50/3		

robotcoupe®
BLIXER 5 V.V.A

 N° de série / Serial number
 -141 - -


* Voir tarif machines / See export price list

Maj : 09/2008

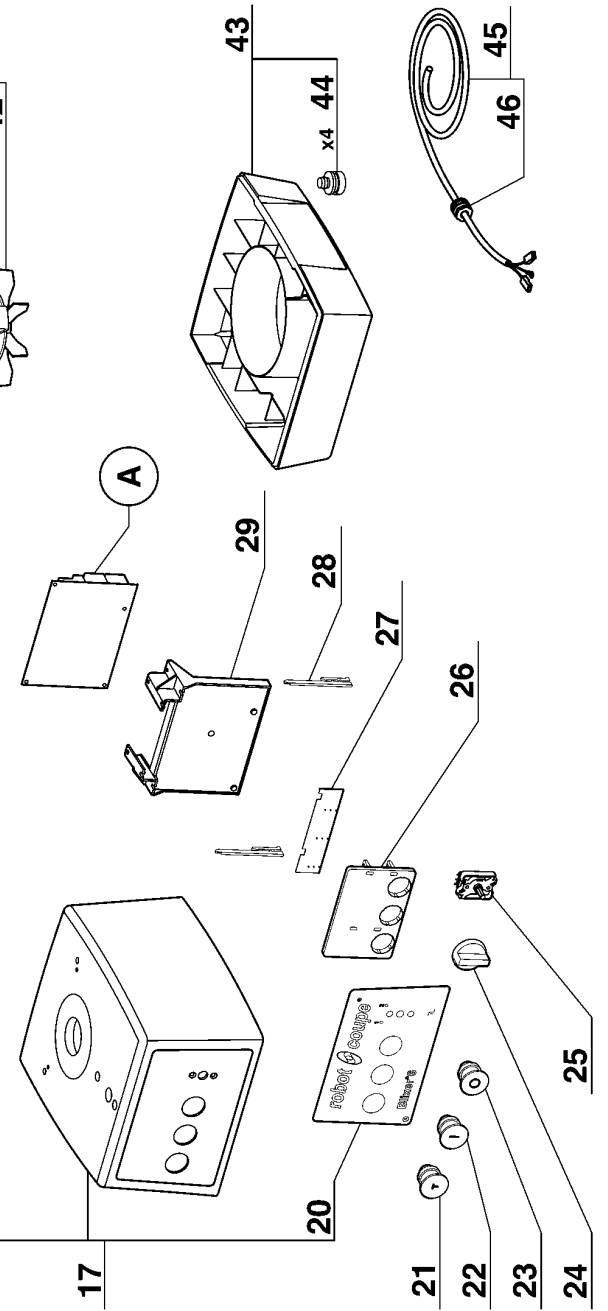
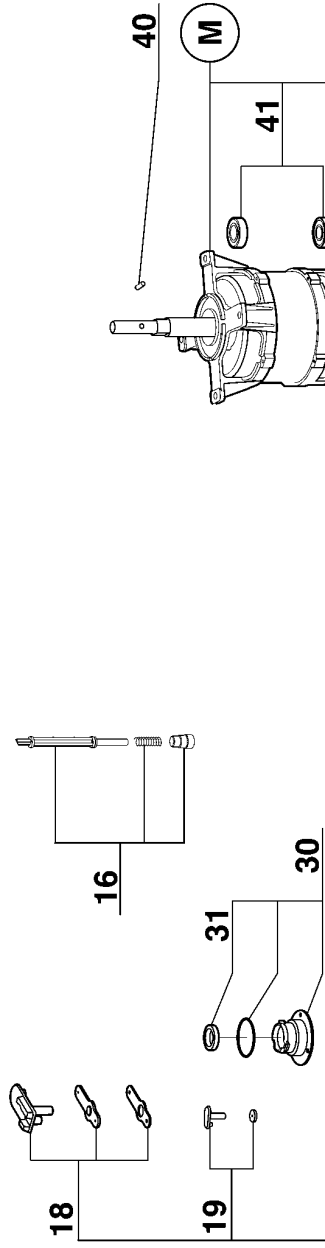
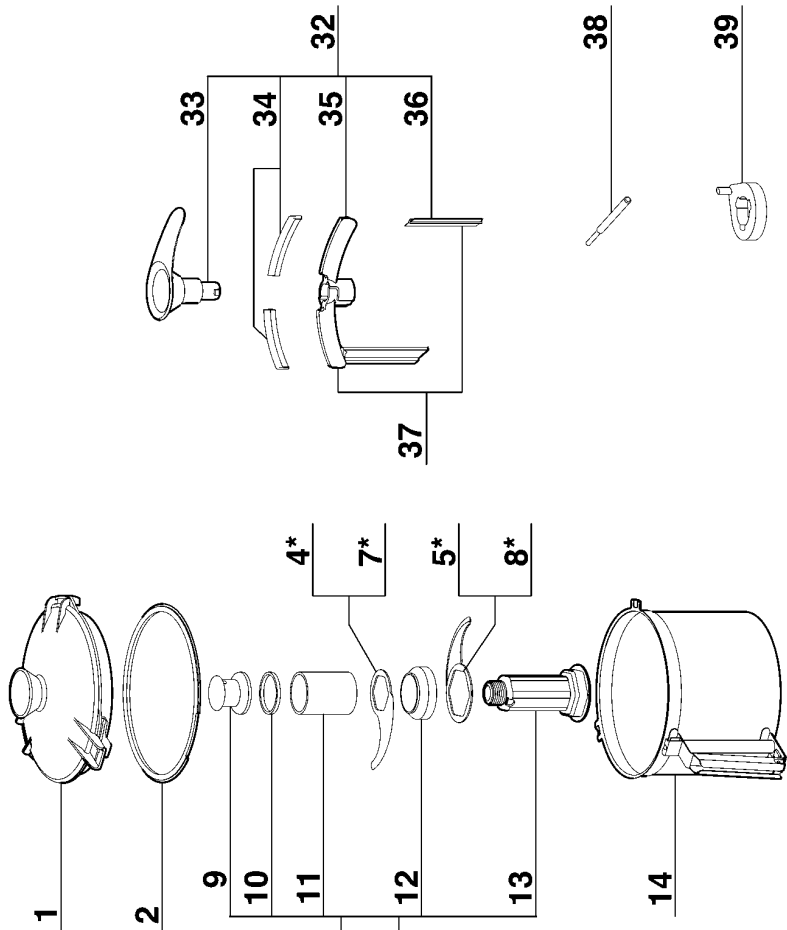
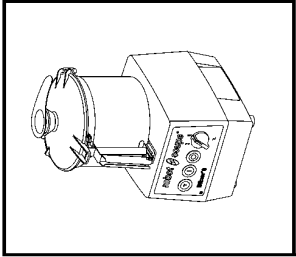
REV : c

Index	Pièce / Part	Désignation	Description
1	29 341	COUVERCLE CUTTER	CUTER LID
2	117 100	JOINT COUVERCLE	LID SEAL
3	117 186	BOUCHON COUTEAU	LID CAP
4*	27 155*	COUTEAU DENTE	FINE SERRATED BLADE
5	117 196	CUVE BLIXER 5	BOWL BLIXER 5
6	39 827	ENS. GACHETTE CUVE	SPRING CATCH ASSEMBLY
7	39 474	ENS. TIGE SECURITE	SAFETY ROAD ASSEMBLY
8	29 596	ENS. SUPPORT MOTEUR	MOTOR SUPPORT ASSEMBLY
9	29 586	ENS. ILS CUTTER	REED SWITCH CUTTER ASSEMBLY
10	29 336	ENS. APPUI CUVE	BOWL SUPPORT ASSEMBLY
11	406 280	PLAQUE FRONTALE	FRONT PLATE
12	502 171	BOUTON NOIR	BLACK KNOB
13	502 170	BOUTON VERT	GREEN KNOB
14	502 169	BOUTON ROUGE	RED KNOB
15	117 073	POIGNEE POTENTIOMETRE	POTENTIOMETER HANDLE
16	39 202	POTENTIOMETRE	POTENTIOMETER
17	29 533	ENS. SUPPORT PLATINE	PCB SUPPORT ASSEMBLY
18	117 813	CARTE BOUTON	CONTROLS PCB
19	117 703	CLAVETTE	KEY
20	39 088	ENS. PORTE JOINT	SEAL SUPPORT ASSEMBLY
21	501 624	BAGUE D'ETANCHEITE	SEAL RING
22	29 373	ENS. BRAS RACLEUR	SCRAPPER ASSEMBLY
23	117 187	POIGNEE BRAS RACLEUR	SCRAPPER HANDLE
24	117 192	RACLEUR SUPERIEUR	UPPER SCRAPPER
25	117 653	BRAS RACLEUR BLIXER 5	SCRAPPER BLIXER 5
26	29 468	BRAS RACLEUR	SCRAPPER
27	117 651	RACLEUR VERTICAL	VERTICAL SCRAPPER
28*	27 180*	COUTEAU CRANTE	COMPLETE SERRATED BLADE
29	103 905	DEFLECTEUR	DEFLECTOR
30	117 710	VARIATEUR	REDUCTOR
31	117 705	SEPARATEUR DE FLUX	AIR FLOW SEPARATOR
32	110 308	GOUPILLE AXE MOTEUR	MOTOR SHAFT PIN
33	303 009	MOTEUR	MOTOR
34	39 819	ENS. ROULEMENT MOT R 502	BEARING ASSEMBLY
35	105 885	VENTILATEUR	FAN
36	515 515	PRESSE ETOUPE	STRAIN RELIEF
37	29 581	ENS. SOCLE	BASE ASSEMBLY
38	39 833	PIED GRIS	GREY FOOT

A CABLE D'ALIMENTATION POWER CORD

Machine	Voltage	A
33 172 UK	230/50/60/1	503 126
33 173 Aust		504 289
33 171		503 978

* Voir tarif machines / See export price list



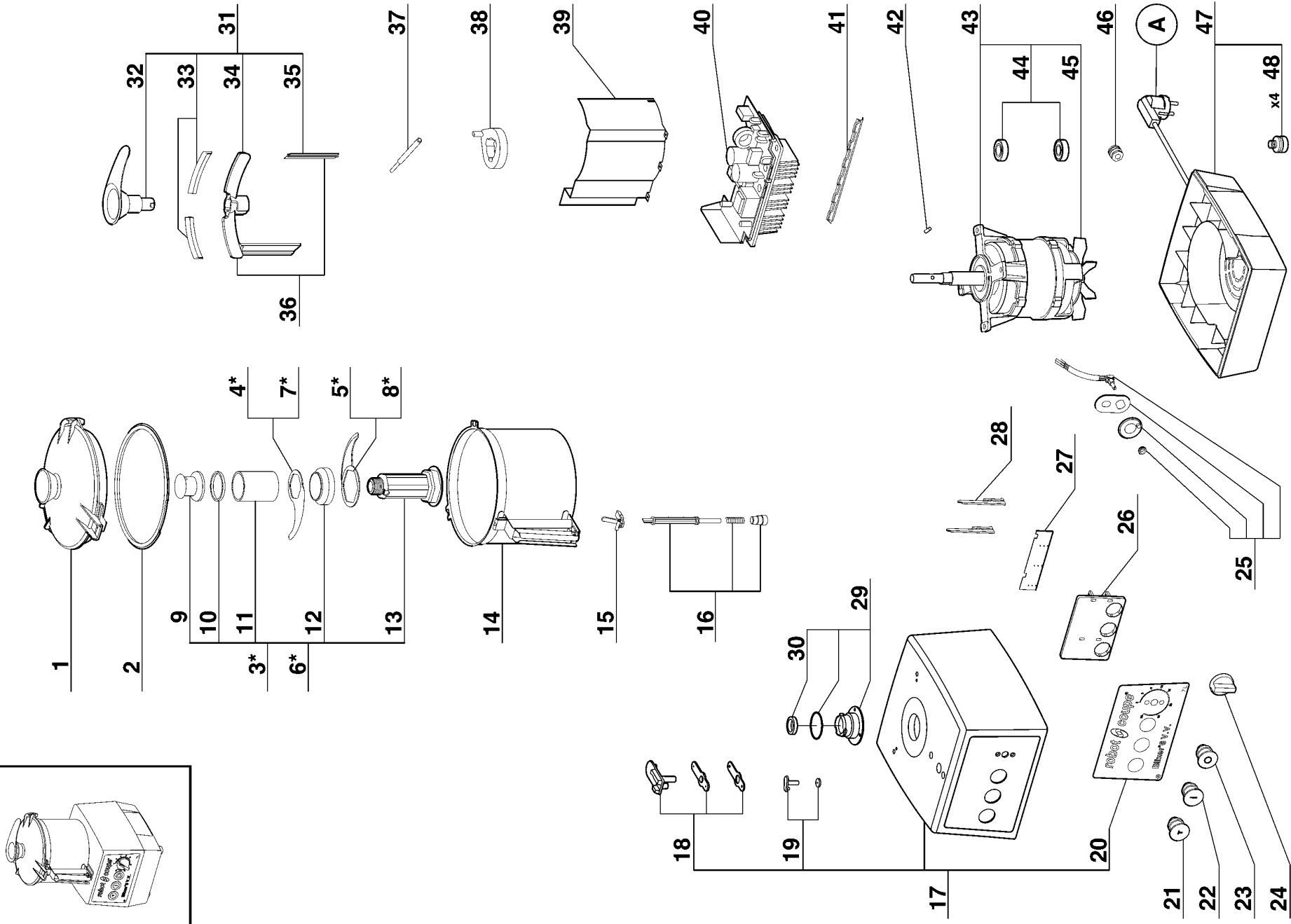
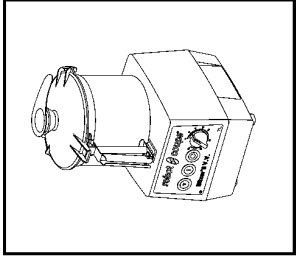
* Voir tarif machines / See export price list

Index	Pièce / Part	Désignation	Description
1	29 341	COUVERCLE CUTTER	CUTER LID
2	117 100	JOINT COUVERCLE	LID SEAL
3*	27 169*	COUTEAU DENTE	COMPLETED FINE SERRATED BLADE
4*	117 193*	LAME SUPERIEUR DENTE	UPPER FINE SERRATED BLADE
5*	117 194*	LAME INFERIEUR DENTE	LOWER FINE SERRATED BLADE
6*	28 191*	COUTEAU CRANTE	COMPLETE SERRATED BLADE
7*	127 618*	LAME SUPERIEUR CRANTE	UPPER SERRATED BLADE
8*	127 619*	LAME INFERIEUR CRANTE	LOWER SERRATED BLADE
9	117 536	ECROU DE COUTEAU	BLADE LOCKING NUT
10	117 177	BAGUE PLASTIQUE 5 mm	PLASTIC RING 5 mm
11	117 176	BAGUE INOX 77 mm	ST ST RING 77 mm
12	117 178	ENTRETOISE BASSE	LOWER SPACER
13	117 538	SUPPORT COUTEAU	BLADE SUPPORT
14	117 197	CUVE CUTTER	CUTTER BOWL
15	39 827	ENS. GACHETTE CUVE R 502	SPRING CATCH ASSEMBLY
16	39 475	ENS. TIGE SECURITE R 602	SAFETY ROAD ASSEMBLY
17	39 382	ENS. SUPPORT MOTEUR	MOTOR SUPPORT ASSEMBLY
18	29 586	ENS. ILS CUTTER	REED SWITCH CUTTER ASSEMBLY
19	29 336	ENS. APPUI CUVE	BOWL SUPPORT ASSEMBLY
20	410 209	PLAQUE FRONTALE	FRONT PLATE
21	502 171	BOUTON NOIR	BLACK KNOB
22	502 170	BOUTON VERT	GREEN KNOB
23	502 169	BOUTON ROUGE	RED KNOB
24	117 072	POIGNEE COMMUTATEUR	COMMUTATOR HANDLE
25	117 792	COMMUTATEUR	COMMUTATOR
26	29 533	ENS. SUPPORT PLATINE	PCB SUPPORT ASSEMBLY
27	117 813	CARTE BOUTON	CONTROLS PCB
28	117 703	CLAVETTE	KEY
29	117 809	SUPPORT PLATINE	CONTROL BOARD SUPPORT
30	39 088	ENS. PORTE JOINT	SEAL SUPPORT ASSEMBLY
31	501 624	BAGUE D'ETANCHEITE	SEAL RING
32	29 415	ENS. BRAS RACLEUR NM	SCRAPPER ASSEMBLY NM
33	117 187	POIGNEE BRAS RACLEUR	SCRAPPER HANDLE
34	117 192	RACLEUR SUPERIEUR	UPPER SCRAPPER
35	117 654	BRAS RACLEUR BLIXER 6	SCRAPPER BLIXER 6
36	29 486	BRAS RACLEUR	SCRAPPER
37	117 652	RACLEUR VERTICAL	VERTICAL SCRAPPER
38	101 845	CLEF COUTEAU	KNIFE KEY
39	117 320	DEMONTE COUTEAU	DISSASSEMBLY BLADES TOOL
40	110 308	GOUPILLE AXE MOTEUR	MOTOR SHAFT PIN
41	39 819	ENS. ROULEMENT MOT R 502	BEARING ASSEMBLY
42	105 885	VENTILATEUR	FAN
43	29 581	ENS. SOCLE	BASE ASSEMBLY
44	39 833	PIED GRIS	GREY FOOT
45	515 570	CABLE D'ALIMENTATION	POWER CORD
46	515 515	SERRE CABLE	STRAIN RELIEF

A	PLATINE	POWER CIRCUIT BOARD
M	MOTEUR	MOTOR

Machine	Voltage	A	M
33 226	230/400/50/3	112 600	303 114
33 227	400/50/3	102 600	303 051

* Voir tarif machines / See export price list



* Voir tarif machines / See export price list

Index	Pièce / Part	Désignation	Description
1	29 341	COUVERCLE CUTTER	CUTER LID
2	117 100	JOINT COUVERCLE	LID SEAL
3*	27 169*	COUTEAU DENTE	COMPLETED FINE SERRATED BLADE
4*	117 193*	LAME SUPERIEUR DENTE	UPPER FINE SERRATED BLADE
5*	117 194*	LAME INFERIEUR DENTE	LOWER FINE SERRATED BLADE
6*	28 191*	COUTEAU CRANTE	COMPLETE SERRATED BLADE
7*	127 618*	LAME SUPERIEUR CRANTE	UPPER SERRATED BLADE
8*	127 619*	LAME INFERIEUR CRANTE	LOWER SERRATED BLADE
9	117 536	ECROU DE COUTEAU	BLADE LOCKING NUT
10	117 177	BAGUE PLASTIQUE 5 mm	PLASTIC RING 5 mm
11	117 176	BAGUE INOX 77 mm	ST ST RING 77 mm
12	117 178	ENTRETOISE BASSE	LOWER SPACER
13	117 538	SUPPORT COUTEAU	BLADE SUPPORT
14	117 197	CUVE CUTTER	CUTTER BOWL
15	39 827	ENS. GACHETTE CUVE R 502	SPRING CATCH ASSEMBLY
16	39 475	ENS. TIGE SECURITE R 602	SAFETY ROAD ASSEMBLY
17	29 584	ENS. SUPPORT MOTEUR	MOTOR SUPPORT ASSEMBLY
18	29 586	ENS. ILS CUTTER	REED SWITCH CUTTER ASSEMBLY
19	29 336	ENS. APPUI CUVE	BOWL SUPPORT ASSEMBLY
20	405 591	PLAQUE FRONTALE	FRONT PLATE
21	502 171	BOUTON NOIR	BLACK KNOB
22	502 170	BOUTON VERT	GREEN KNOB
23	502 169	BOUTON ROUGE	RED KNOB
24	117 073	POIGNEE POTENTIOMETRE	POTENTIOMETER HANDLE
25	39 202	POTENTIOMETRE	POTENTIOMETER
26	29 533	ENS. SUPPORT PLATINE	PCB SUPPORT ASSEMBLY
27	117 706	CARTE BOUTON	CONTROLS PCB
28	117 703	CLAVETTE	KEY
29	39 088	ENS. PORTE JOINT	SEAL SUPPORT ASSEMBLY
30	501 624	BAGUE D'ETANCHEITE	SEAL RING
31	29 415	ENS. BRAS RACLEUR NM	SCRAPPER ASSEMBLY NM
32	117 187	POIGNEE BRAS RACLEUR	SCRAPPER HANDLE
33	117 192	RACLEUR SUPERIEUR	UPPER SCRAPPER
34	117 654	BRAS RACLEUR BLIXER 6	SCRAPPER BLIXER 6
35	29 486	BRAS RACLEUR	SCRAPPER
36	117 652	RACLEUR VERTICAL	VERTICAL SCRAPPER
37	101 845	CLEF COUTEAU	KNIFE KEY
38	117 320	DEMONTE COUTEAU	DISSASSEMBLY BLADES TOOL
39	103 905	DEFLECTEUR	DEFLECTOR
40	117 710	VARIATEUR	REDUCTOR
41	117 705	SEPARATEUR DE FLUX	AIR FLOW SEPARATOR
42	110 308	GOUPILLE AXE MOTEUR	MOTOR SHAFT PIN
43	303 009	MOTEUR	MOTOR
44	39 819	ENS. ROULEMENT MOT R 502	BEARING ASSEMBLY
45	105 885	VENTILATEUR	FAN
46	515 515	PRESSE ETOUPE	STRAIN RELIEF
47	29 581	ENS. SOCLE	BASE ASSEMBLY
48	39 833	PIED GRIS	GREY FOOT

A		CABLE D'ALIMENTATION	POWER CORD
Machine		Voltage	A
33 156	UK	230/50/60/1	503 126
33 157	Aust		504 289
33 155			503 978

* Voir tarif machines / See export price list

SCHEMA ELECTRIQUE

ELECTRIC DIAGRAM

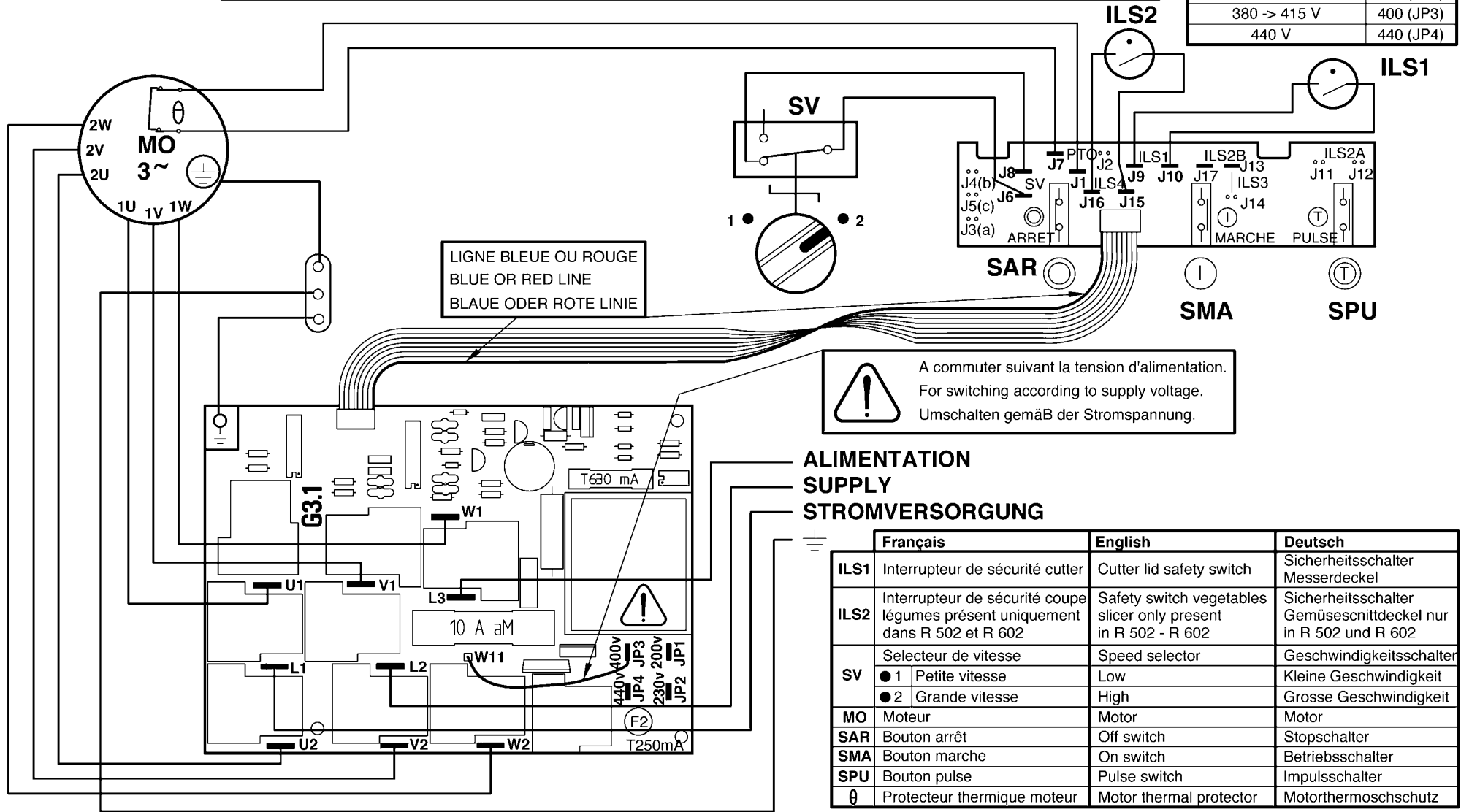
ELEKTRISCHES SCHALTBILD



Important
Précautions
Wichtiger Hinweis

Vérifier que le fil d'adaptation à la tension de votre réseau est correctement positionné (voir tableau ci-contre).
Check that the wire which allows the adaptation to the supply voltage is on the right terminal (table in the margin).
Unbedingt prüfen, ob der Draht zur Anpassung an die Spannung Ihres Stromnetzes Korrekt positioniert ist (Tafel Gegenüber).

Tension d'alimentation Supply voltage Stromspannung	Connexion Terminal Anschluss
200 V	200 (JP1)
220 -> 240 V	230 (JP2)
380 -> 415 V	400 (JP3)
440 V	440 (JP4)



	Français	English	Deutsch
ILS1	Interrupteur de sécurité cutter	Cutter lid safety switch	Sicherheitsschalter Messerdeckel
ILS2	Interrupteur de sécurité coupe légumes présent uniquement dans R 502 et R 602	Safety switch vegetables slicer only present in R 502 - R 602	Sicherheitsschalter Gemüseschnittdeckel nur in R 502 und R 602
SV	Selecteur de vitesse ● 1 Petite vitesse ● 2 Grande vitesse	Speed selector Low High	Geschwindigkeitsschalter Kleine Geschwindigkeit Grosse Geschwindigkeit
MO	Moteur	Motor	Motor
SAR	Bouton arrêt	Off switch	Stopschalter
SMA	Bouton marche	On switch	Betriebsschalter
SPU	Bouton pulse	Pulse switch	Impulsschalter
θ	Protecteur thermique moteur	Motor thermal protector	Motorthermoschutz

R 5 V.V.a - BLIXER 5 V.V.a / R 6 V.V.a - BLIXER 6 V.V.a

200-230V/50-60Hz 1~

SCHEMA ELECTRIQUE

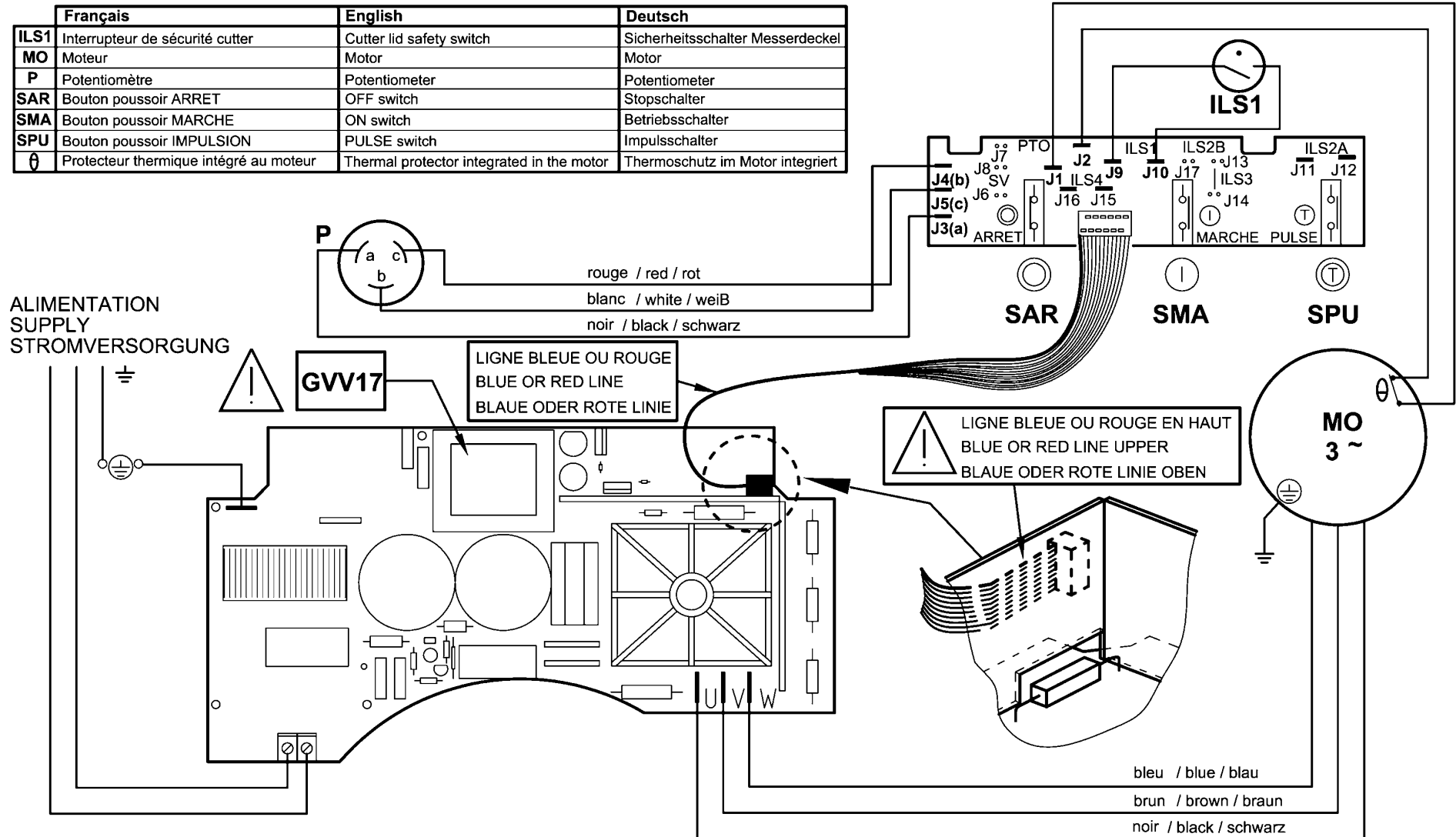
ELECTRIC DIAGRAM

ELEKTRISCHES SCHALTBILD



Important : Vérifier le sens de rotation de l'outil (anti-horaire) si nécessaire inverser 2 fils du moteur.
Caution : Check the tool's rotation sense (anti-time) if necessary revers 2 motor wires.
Wichtiger Hinweis : Sinn Umdrehung von der Werkzeug unbedingt (anti-Stundlich) Notwendig zwei Leitung dor Motor umkehren

	Français	English	Deutsch
ILS1	Interrupteur de sécurité cutter	Cutter lid safety switch	Sicherheitsschalter Messerdeckel
MO	Moteur	Motor	Motor
P	Potentiomètre	Potentiometer	Potentiometer
SAR	Bouton poussoir ARRET	OFF switch	Stopschalter
SMA	Bouton poussoir MARCHE	ON switch	Betriebsschalter
SPU	Bouton poussoir IMPULSION	PULSE switch	Impulsschalter
	Protecteur thermique intégré au moteur	Thermal protector integrated in the motor	Thermoschutz im Motor integriert



R 5 V.V.a - BLIXER 5 V.V.a / R 6 V.V.a - BLIXER 6 V.V.a

200-230V/50-60Hz 1~

SCHEMA ELECTRIQUE

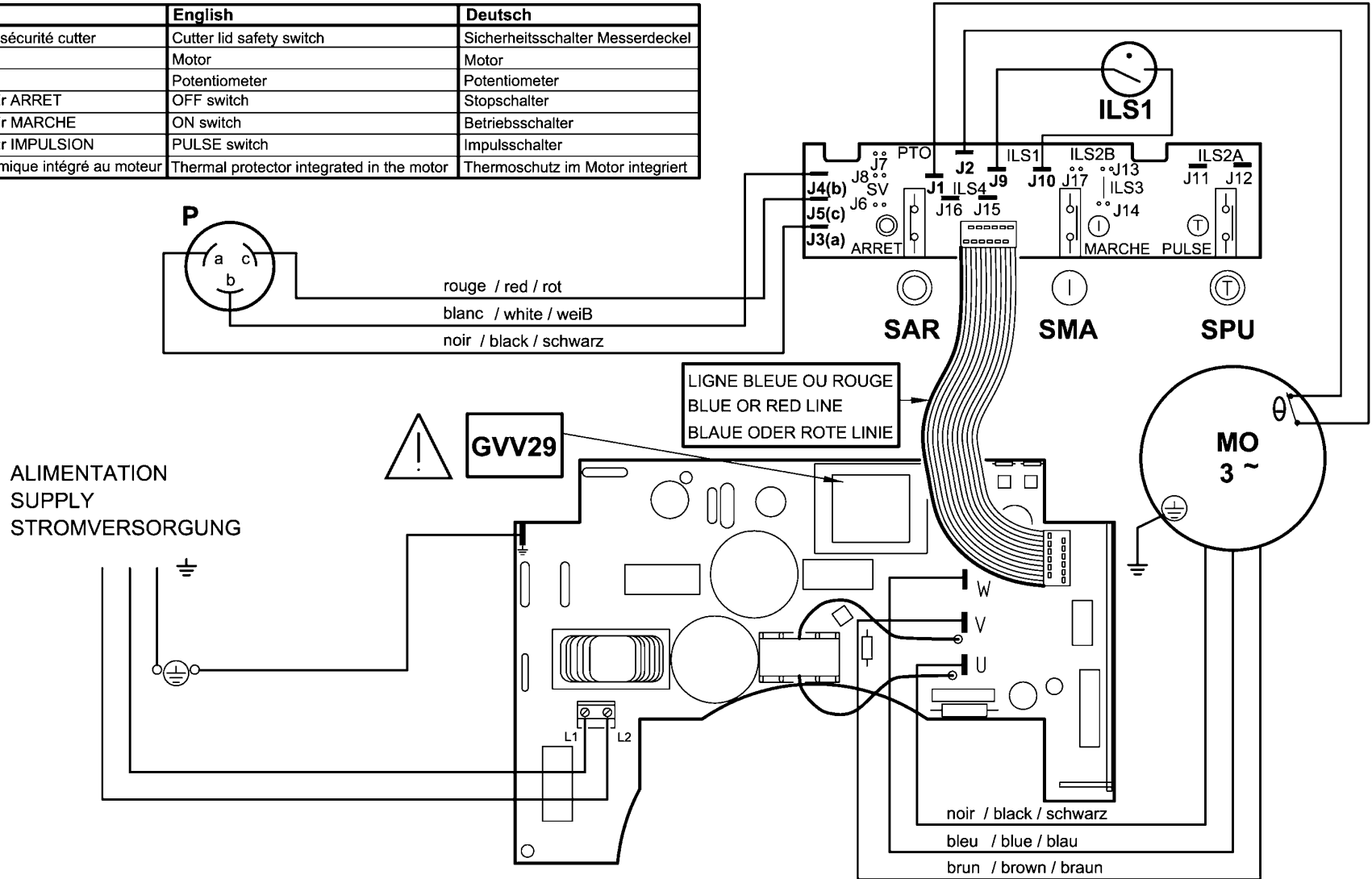
ELECTRIC DIAGRAM

ELEKTRISCHES SCHALTBILD



Important : Vérifier le sens de rotation de l'outil (anti-horaire) si nécessaire inverser 2 fils du moteur.
Cautions : Check the tool's rotation sense (anti-time) if necessary revers 2 motor wires.
Wichtiger Hinweis : Sinn Umdrehung von der Werkzeug unbedingt (anti-Stundlich) Notwendig zwei Leitung dor Motor umkehren

	Français	English	Deutsch
ILS1	Interrupteur de sécurité cutter	Cutter lid safety switch	Sicherheitsschalter Messerdeckel
MO	Moteur	Motor	Motor
P	Potentiomètre	Potentiometer	Potentiometer
SAR	Bouton poussoir ARRET	OFF switch	Stopschalter
SMA	Bouton poussoir MARCHÉ	ON switch	Betriebsschalter
SPU	Bouton poussoir IMPULSION	PULSE switch	Impulsschalter
	Protecteur thermique intégré au moteur	Thermal protector integrated in the motor	Thermoschutz im Motor integriert





robot coupe®

FABRIQUÉ EN FRANCE PAR ROBOT-COUBE S.N.C.

**Administration Commerciale France
& Service Après-Vente**

Tél. : 03 85 69 50 00 - Fax : 03 85 69 50 07
12, avenue du Maréchal Leclerc - BP 134
71305 Montceau-en-Bourgogne Cedex
email : france@robot-coupe.fr

**Agence de Service Après-Vente
pour la Région Parisienne**

Tél. : 01 43 98 88 15 - Fax : 01 43 74 36 26
48, rue des Vignerons
BP 157
94305 Vincennes Cedex - France

Export Department

Tel. : + 33 1 43 98 88 33 - Fax : + 33 1 43 74 36 26
48, rue des Vignerons - BP 157
94305 Vincennes Cedex - France
<http://www.robot-coupe.com> - email : international@robot-coupe.com