

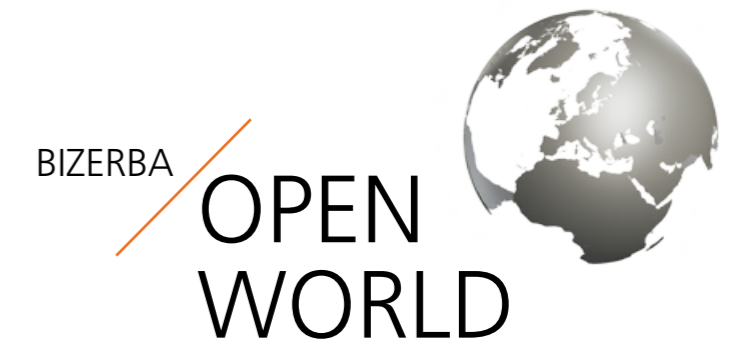


X-Class

The access to the future

»It is our aim to supply optimized solutions that are easy to use and answer individual business needs.«

Andreas W. Kraut
CEO Bizerba SE & Co. KG



Our experience sets standards

We are a family-owned company guided by a commitment to tradition, sustainability and responsibility. Nowadays, based on our core competence of slicing and weighing technology, we offer our customers the industry's largest and most unique range of products and solutions as hardware, software and services, anywhere in the world.

As a global acting technology company, we allow ourselves to be led by the aim and the requirement to achieve the best possible results in terms of

ergonomics, hygiene, safety and efficiency. We believe we have a role to play in shaping our markets, and are continually setting new industry standards. In close collaboration with our customers and against a backdrop of technological advancement, we are working to improve our products on a daily basis – resulting in innovations which become new standards.

In order to continue to live up to these requirements, we focus on the highest possible quality standards and internationally recognized technol-

ogy standards in our development and manufacturing work. We aim to provide our customers with easy-to-use and optimized purpose-built products and solutions for each individual application. This is how we best support our customers in achieving maximum efficiency and profitable growth.

Our experience sets standards.
That's what matters to us.
Bizerba.



A class on its own

Latest PC technology in compact design paired with an all-purpose printer. The X-Class represents access to high-performance PC-based scales with touch screen operation. Comfortable, intuitive and easy to work with. Ease of cleaning thanks to Easy Clean.

Clear lines, smooth surfaces, appealing design combined with highly developed technology: Our X-Class impresses in terms of its balanced relationship between form and function.

Here is a new generation of PC scales with touch screen operation. It stands for the Open World of Bizerba: The devices are open for all retail requirements such as weighing, cashing, printing, advising shoppers as well as presenting advertising

content, and cross selling. Furthermore, an open PC platform controls the scales.

All X-Class models are compact, versatile, uncomplicated, powerful and exemplary in terms of cleaning and hygiene whereas each model has its own advantages. No matter which retail requirement it is – the user uses a high-quality scale with convincing profile and benefits from easier and faster workflows.

X-Class XC 800



Easy Clean

- Frameless display
- One-piece casing design
- Very easy to clean
- Resistant to dirt, fingerprints, labels and traces of use
- Long-lasting flawless appearance



Green IT

- High performance at low level of power consumption (no fan)
- Economical components (SSD, LED backlighting)
- Highly efficient power unit
- Wake On LAN



Inner values

- Modern Dual Core Processor
- Fast SSD memories, DDR3 RAM
- Highspeed graphics
- Highspeed interfaces



Software

- Platform for:
- RetailPowerScale
 - RetailFramework
 - RetailControl
 - RetailConnect
 - RetailImpact
 - RetailApps
 - RetailIntegratorsKit



Easy Level*

- Recognizes if the scale is not leveled
- Automatically corrects the weighing value
- No loss of revenue if the scale is not leveled

**optional*



Easy Load

- Quick and easy paper insertion in the new ticket/linerless printer
- Paper widths up to 80 mm, roll lengths up to 80 m, printing speed up to 100 mm/s
- Label layouts can be printed on pre-printed linerless paper

The XC 800 counter scale is a universal tool at the fresh food counter which supports assisted sales in any way and saves energy. All retail tasks are done easily. Combined with a cash register drawer it can be used at the same time as a high-performance cash register solution.

The integrated open PC platform is future-oriented, allowing new functions or customer-specific requirements to be realized, even using 3rd party software. A true all-rounder is the revolutionary printer. This printer meets all requirements in daily operation.

Daily business also involves cleaning which is very easily done with the X-Class. Its compact design, Easy Clean casing surface and the frameless Easy Clean display support these "clean" advantages.



The access to the future



Easy Clean

All casing surfaces are dirt-repellent, extremely stable and corrosion-resistant, and they comply with the toughest international hygiene guidelines. Thanks to the innovative surface coating, stray labels can be removed easily – and even stubborn food residues can simply be wiped away.

The customer and operator monitors have a True Flat design. Thus the transition between casing and monitor is completely smooth. Dirt that would have to be cleared away tediously is now a thing of the past. As a result, the Easy Clean displays not only look particularly stylish but also offer a number of important practical benefits.

Inner values

On the inside, there is an integrated computer with a particularly high-performance Intel® processor, underlining the fact that these systems should no longer be called 'scales' but rather 'PCs'. In fact, combined with the revolutionary Bizerba software RetailPowerScale, the system represents a state-of-the-art, high-tech workstation of the best possible quality. Thanks to its open technology, the X-Class can be integrated into an existing IT environment.

RetailApps

RetailApps are true masters in flexibility, adapting to meet specific market requirements. They are separate, self-contained solutions that are easily docked on to the scale software RetailPowerScale via standardized interfaces. The advantages are clear: less development time, lower costs and investment protection thanks to care and maintenance. Existing RetailApps are immediately available for operation and their solution portfolio is growing constantly.

RetailPowerScale

RetailPowerScale offers an all-in-one solution for food retailers of all shapes and sizes. Whether for small, specialist store-owners or the world's top 100 grocery retailers, RetailPowerScale is the key that transforms the PC-based scale into a multifunctional device. The modular RetailApps mean that new functions can be added quickly and easily. The functionality can be scaled up or down precisely as needed, and even the layout details can be adapted. Hence, individuality is combined with all the advantages of standard software, seamlessly integrated into the existing IT infrastructure.

Operating costs are reduced and sales are increased – all thanks to RetailPowerScale. Furthermore, the carefully considered use of both the operator display and the customer display, which can be addressed separately, offers unparalleled sales opportunities at the point of service.

Easy Level

Easy Level is an automatic tilt compensation eliminating weighing errors. These can otherwise be commonplace, such as when the scale is in mobile use or is placed on an unlevel surface. Thanks to the Easy Level technology, the angle of tilt is measured and compensated automatically, thus guaranteeing that the correct weight value is displayed. Bottom line: A correct weight despite tilt means no loss of revenue.

Easy Load

A new printer that really does its name justice – because although it can handle virtually all standard types of paper, the rolls can be exchanged amazingly quickly. From ticket printing on two or three-inch rolls with paper widths of up to 80 millimeters through the use of linerless paper right up to label printing – anything is possible, and the convenient handling saves valuable time.



XC 800 10"

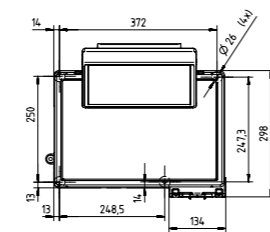
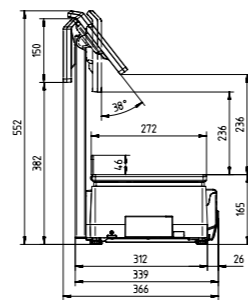
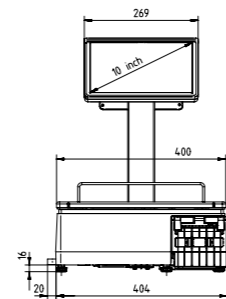
Highlights

- Counter scale with 10.1" touch TFT operator display
- Customer display: 7" TFT
- Easy Clean for quick and easy cleaning of the scale
 - Surface: problem free removal of stray labels
 - Displays: frameless for maximum cleaning efficiency
- Load plate: optimum ease of handling
- Easy Load enables paper rolls to be changed in a matter of seconds
 - 3-in-1 all-purpose printer: ticket, linerless, label
 - Paper width up to 80 mm, roll length up to 80 m, print speed up to 100 mm/s
 - Printing of label layouts on pre-printed linerless paper
- Easy Level tilt compensation*
 - Accurate weighing results even when the scale is not leveled, no loss of revenue
- High-end PC-based scale with outstanding Intel® Dual Core Processor for optimum performance and perfect graphics with minimum power consumption

*Options

- Easy Level tilt compensation
 - Various weighing ranges
 - Cash drawer
 - WLAN
 - EC-Cash connection
 - Meat tray
 - High-end software package RetailFramework
 - RetailPowerScale scale software
 - RetailApps for additional functionality
 - RetailIntegratorsKit for 3rd party software
- Plus many more software options for additional solutions.*

Dimensions



XC 800 15"

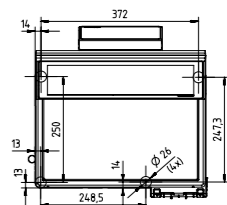
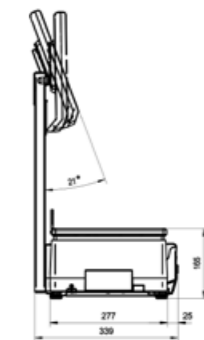
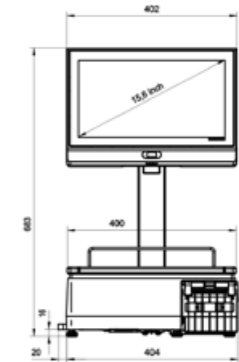
Highlights

- Counter scale with 15.6" Touch TFT operator display
- Customer display: 7" TFT, optional no customer display
- Easy Clean for quick and easy cleaning of the scale
 - Surface: problem free removal of stray labels
 - Displays: frameless for maximum cleaning efficiency
- Load plate: optimum ease of handling
- Easy Load enables paper rolls to be changed in a matter of seconds
 - 3-in-1 all-purpose printer: ticket, linerless, label
 - Paper width up to 80 mm, roll length up to 80 m, print speed up to 100 mm/s
 - Printing of label layouts on pre-printed linerless paper
- Easy Level tilt compensation*
 - Accurate weighing results even when the scale is not leveled, no loss of revenue
- High-end PC-based scale with outstanding Intel® Dual Core Processor for optimum performance and perfect graphics with minimum power consumption

*Options

- Easy Level tilt compensation
 - Various weighing ranges
 - Cash drawer
 - WLAN
 - EC-Cash connection
 - Meat tray
 - High-end software package RetailFramework
 - RetailPowerScale scale software
 - RetailApps for additional functionality
 - RetailIntegratorsKit for 3rd party software
- Plus many more software options for additional solutions.*

Dimensions





XC 400 10"

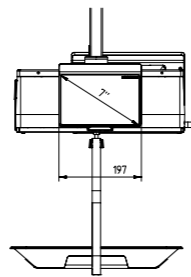
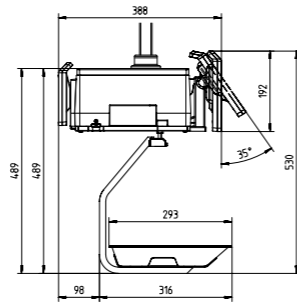
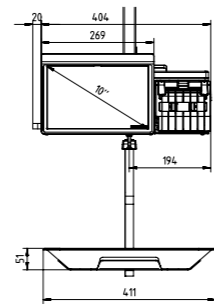
Highlights

- Hanging scale, specifically for the fish counter
- Operator display: 10.1" touch TFT
- Customer display: 7" TFT
- Easy Clean for quick and easy cleaning of the scale
 - Surface: problem free removal of stray labels
 - Displays: frameless for maximum cleaning efficiency
 - Load plate: optimum ease of handling
- Easy Load enables paper rolls to be changed in a matter of seconds
 - 3-in-1 all-purpose printer: ticket, linerless, label
 - Paper width up to 80 mm, roll length up to 80 m, print speed up to 100 mm/s
 - Printing of label layouts on pre-printed linerless paper
- High-end PC-based scale with outstanding Intel® Dual Core Processor for optimum performance and perfect graphics with minimum power consumption

*Options

- Various weighing ranges
 - Cash drawer
 - WLAN
 - EC-Cash connection
 - High-end software package RetailFramework
 - RetailPowerScale scale software
 - RetailApps for additional functionality
 - RetailIntegratorsKit for 3rd party software
- Plus many more software options for additional solutions.*

Dimensions



XC 100 10"

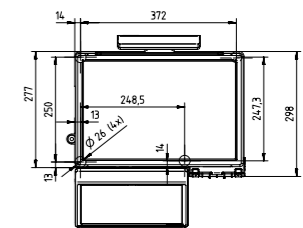
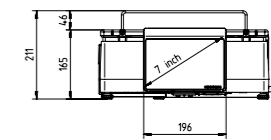
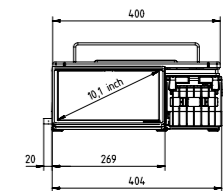
Highlights

- Counter top scale with 10.1" touch TFT operator display
- Customer display: 7" TFT
- Easy Clean for quick and easy cleaning of the scale
 - Surface: problem free removal of stray labels
 - Displays: frameless for maximum cleaning efficiency
 - Load plate: optimum ease of handling
- Easy Load enables paper rolls to be changed in a matter of seconds
 - 3-in-1 all-purpose printer: ticket, linerless, label
 - Paper width up to 80 mm, roll length up to 80 m, print speed up to 100 mm/s
 - Printing of label layouts on pre-printed linerless paper
- Easy Level tilt compensation*
 - Accurate weighing results even when the scale is not leveled, no loss of revenue
- High-end PC-based scale with outstanding Intel® Dual Core Processor for optimum performance and perfect graphics with minimum power consumption

*Options

- Easy Level tilt compensation
 - Various weighing ranges
 - Cash drawer
 - WLAN
 - EC-Cash connection
 - Meat tray
 - High-end software package RetailFramework
 - RetailPowerScale scale software
 - RetailApps for additional functionality
 - RetailIntegratorsKit for 3rd party software
- Plus many more software options for additional solutions.*

Dimensions



RetailApps: Small units of functionality with major impact

These useful applications supplement the RetailPowerScale scale solution and combine individuality with the advantages of standard software. Modular design, readily available, at an attractive price. Our RetailApps are versatile solutions, integrable with RetailPowerScale. Many RetailApps are already available, e.g. for the functionalities: traceability data management, order management, promotions, timed actions.

Examples for RetailApps



EasyOrder

It doesn't get any easier: With the RetailApp EasyOrder you manage customer orders directly on the scale – from recording and preparing orders up to completion for order pick-up.



LasVegas

Entertain your customers while shopping: With LasVegas you use the perfect RetailApp for promotions.



KeyOrganizer

Always well organized: With the RetailApp KeyOrganizer you design your individual interface and article presentation even more flexibly.



IngredientManager

In accordance with legal requirements: With the RetailApp IngredientManager you quickly and efficiently mark allergenic ingredients in your ingredient lists and stay on top of things even with many products and allergenic ingredients.



SnackBar

Actively increase sales: Link product proposals to your articles with the RetailApp SnackBar and sell more with the help of active operator prompting.



TimedAction

Perfect timing via your PC scale: With the RetailApp TimedAction you shut down your scales in a controlled manner at the end of a work day, or you remind your operating staff in an efficient manner to check displayed merchandise on a regular basis.

ADVANTAGE

MODULAR



RetailPowerScale

RetailPowerScale presents itself as a true all-rounder for retailing. Many companies of the food industry benefit from this system which multiplies the possibilities of sale at the point of service. Thus the scale becomes a sales assistant and a reference guide and includes an unparalleled number of weighing functions. Noticeable advantages arise for your business since there is more time left for customer advice thanks to quick, intuitive operating processes.

Open and integrable

The modular RetailApps ensure even more variety. And it doesn't get any better: individuality in line with the advantages of a standard software which seamlessly integrates in an existing IT infrastructure.



More information
High performance
with a wide range of
solutions and options.

For top quality and reliable performance

Rely on high quality cleaning agents and original consumables in Bizerba quality during your daily work with your X-Class products. Everything is perfectly matched to your products ensuring best possible results and longevity of your investment. Benefit from perfect team work.

Cleaning agents

Optimal functioning and constant availability of your devices and machines require professional care. Our high quality cleaning agents play an important role here since they were specifically developed for demanding conditions in retail, industry and gastronomy. They are easy to use and show impressive results: perfect cleanliness providing protection as well as disinfecting hygiene for sensible components and smooth surfaces. For each material such as stainless steel, plastic or glass we have a suitable cleaning agent in our comprehensive assortment. Clean solutions for your work area or production.

Quality labels

Many functions using minimal space: Labels are an indicator for price and ingredients and communicate with industry, trade and end customers via barcodes, QR codes, RF and RFID tags. As a key component of the packaging they carry important marketing functions with regard to corporate design, brand names and product marketing. Furthermore, as a production factor they have an impact on costs and feasibility in the manufacturing process. Our quality labels offer almost unlimited possibilities: ranging from the ecological, high quality linerless version and thermal-sensitive labels which are conform with the Food Information Regulation up to multi-functional labels for product and brand protection. Also here we produce in an economical and innovative manner. Learn more about our labels.

Please, contact us!

The new Bizerba care products series - available from summer 2015



An overview of all possibilities

Information to suit your every need

| | XC 800 with 10" | XC 800 with 15" | XC 400 with 10" | XC 100 with 10" |
|-------------------------------------|-----------------|-----------------|-----------------|-----------------|
| Ideal for | | | | |
| Sausages | ● | ● | ⊖ | ● |
| Meat | ● | ● | ⊖ | ● |
| Cheese | ● | ● | ⊖ | ● |
| Fish | ● | ● | ● | ● |
| Fruit & vegetables | ● | ● | ● | ● |
| Bread | ● | ● | ● | ● |
| Non-food | ● | ● | ⊖ | ● |
| For what purpose? | | | | |
| Counter service | ● | ⊖ | ● | ● |
| Self-service | ⊖ | ● | ⊖ | ⊖ |
| Price labeling/prepackaging | ● | ⊖ | ⊖ | ● |
| Goods in/picking | ● | ⊖ | ⊖ | ● |
| Multimedia purposes | ⊖ | ⊖ | ⊖ | ⊖ |
| Checkout | ⊖ | ⊖ | ⊖ | ⊖ |
| Where? | | | | |
| Food retail | ● | ● | ● | ● |
| Craft-based food industry | ● | ● | ● | ● |
| Delicatessens | ● | ● | ● | ● |
| Food service/snack bars | ● | ● | ● | ● |
| DIY stores | ● | ⊖ | × | ● |
| Mobile traders | ● | ⊖ | ⊖ | ● |
| Features | | | | |
| Easy Clean display | ● | ● | ● | ● |
| Easy Fit load plate | ● | ● | ● | ● |
| Easy Load printer | ● | ● | ● | ● |
| Double printer | × | × | × | × |
| Options | | | | |
| Easy Level | ● | ● | ● | ● |
| Cash drawer interface | ● | ● | ● | ● |
| WLAN | ● | ● | ● | ● |
| Separate load receptor up to 150 kg | × | × | × | × |
| Audio Kit | × | × | × | × |

There are various quick and effective routes to finding the perfect solution for your company. Whether you would like to contact us online or prefer to arrange a face-to-face meeting, Bizerba is always happy to help.

In person

If you would like to set up a personal meeting to discuss your on-site circumstances and possibilities, please contact us directly. Our customer advisors are always on hand to assist you, from the initial idea to detailed planning and from implementation to staff training. You can find details of how to contact us on the back page of this brochure.

for yourself thanks to videos and 360° animations. Simply visit our website to see more:

www.bizerba.com

Would you like to know more?

Are you keen to obtain more detailed information about Bizerba's products? If so, please do not hesitate to contact us. Whether you require scale drawings, technical details or interface specifications, we're happy to advise you.

Online

The Bizerba website provides a quick, easy and focused overview of all our product solutions as well as relevant topics relating to weighing, packaging, pricing and labeling. You can even experience our solutions from all angles 'virtually'

Legend

- Optimally suitable for this purpose
- ⊖ Suitable for this purpose
- × Unsuitable for this purpose

Members of the Bizerba Group

Bizerba SE & Co. KG

Wilhelm-Kraut-Straße 65
72336 Balingen
Germany

T +49 7433 12-0
F +49 7433 12-2696
info@bizerba.com

www.bizerba.com

Bizerba USA Inc.

1804 Fashion Court
Joppa, MD 21085
USA

T Office +1 732 565-6000
T Service +1 732 565-6001
F +1 732 819-0429
us.info@bizerba.com

www.bizerbausa.com

Bizerba UK Limited

2-4 Erica Road
Stacey Bushes
Milton Keynes
Buckinghamshire

MK12 6HS
UK
T +44 1908 6827-40
F +44 1908 6827-77
sales@bizerba.co.uk

www.bizerba.com

Bizerba Canada Inc.

2810 Argentic Road #9
Mississauga,
Ontario L5N 8L2
Canada

T +1 905 816-0498
F +1 905 816-0497
ca.info@bizerba.com

www.bizerba.ca

Bizerba Shanghai

Weigh Tech & Systems Co. Ltd.

D-3, Qianpu Road,
Shuhui Real Est.Park
East New Area of Songjiang,
Ind. Zone
201611 Shanghai
China

T +86 21 676009-99
F +86 21 676009-98
marketing.china@bizerba.cn

www.bizerba.cn

11500.10 en © 1st edition. 111340 Subject to modifications. 051340

Deviations in color, printing errors due to the photographic material or printing, or changes in construction and model are reserved.