



# System Class

## Systematic versatility



BIZERBA

# OPEN WORLD



**Our experience sets standards**  
We are a family-owned company guided by a commitment to tradition, sustainability and responsibility. Nowadays, based on our core competence of slicing and weighing technology, we offer our customers the industry's largest and most unique range of products and solutions as hardware, software and services, anywhere in the world.

As a globally operating technology company we are guided by our goal and commitment to achieve maxi-

mum results in terms of ergonomic design, hygiene, safety and efficiency. We believe we have a role to play in shaping our markets, and are continually setting new industry standards. In close collaboration with our customers and against a backdrop of technological advancement, we are working to improve our products on a daily basis – resulting in innovations which become new standards.

In order to continue to live up to these requirements, we focus on the highest possible quality standards

and internationally recognized technology standards in our development and manufacturing work. This is how we best support our customers in achieving maximum efficiency and profitable growth.

Our experience sets standards.  
**That's what sets us apart. Bizerba.**

# Systematic performance



Our System Class brings together all the necessary features for efficient performance. Its model versions permit many solutions which are characterized by their attributes: Technically sophisticated, suitable for a broad weight range and easy to operate.

It particularly stands out due to its broad range of applications because – thanks to its various model versions – our System Class (SC II) provides just the right solution in all retail segments. All central tasks are covered: Assisted sales, self-service, price labeling and transactions. Additional options expand the range of applications. As a result, a broad range of options is available for you.

The SC II scales comprise a broad weight range and can be operated and cleaned easily. Furthermore, you save energy – but not at the expense of performance. In addition, they ensure good communication: All scales can be connected to the back office as well as with each other. Connections to many external devices are possible as well. This way, you can create an efficient work environment for your business success.

# System Class SC II 800 7"

The SC II 800 7" is a counter scale for assisted sales with a modern and functional design which is ideal for any store environment. It's like an extra sales assistant providing convincing "arguments", e.g. as a result of the ergonomic operating concept with direct visual contact with the customer. Or through advertising and information via the 7" customer display creating appealing buying incentives. Moreover, the scale can be used as a cash register, for inventory, data maintenance and pre-packaging.

It is based on a sophisticated technology with a fast processor, large memory, energy-saving components as well as different interfaces. The integrated printer fulfills many requirements even in the standard version of the scale. In addition, there is a broad range of different keyboards.

**Customer display\*\***

- 7" TFT LCD color display with LED backlight
- Article images
- Cross selling images
- Full screen advertising
- Permanent advertising

**Keyboard variety**

- Membrane or tactile keyboard\*
- 84 keys for PLU etc.
- Membrane keyboard can be labeled via write-on inserts, tactile keyboard via a frame\*
- Tactile keyboard: Slip-on frame with 24 self-service keys
- SC II 400, 500: Self-service/QS keyboards

**Software\***

Platform for:

- RetailControl
- RetailConnect
- .CWS\*

**Printer**

Label printer:

- High print speed
- Graphic-capable
- Label sizes and layouts freely configurable

Linerless printer\*:

- Variable label length depending on the data volume

**Green IT**

- High performance at little energy consumption (without fan)
- Economical components (SD card, LED backlight)
- High efficiency power supply unit

**Inner values**

- Microsoft operating system
- Fast processor
- Ethernet interface
- SC II 100, 200, 800: Battery pack
- 12V connection for operation via a car battery\*



\* Optional for all SC II models  
\*\* Optional for SC II 100, 400 and 800



# Functions that add value



## Printer

Powerful equipment right from the outset: The integrated label printer is equipped for label printing or receipt operation. It is part of the standard version of all SC II scales. Important facts: The use of Bizerba consumables increases operational uptime.

The optionally available linerless printer can be fitted with Bizerba linerless thermal rolls without liner. Its advantages: e.g. higher label volumes as a result of longer running lengths, less paper consumption and reduced waste. Sealing instead of stapling: Safe and hygienic sealing of bags by simply attaching a label – no risk arising from staples.

## Customer display

Advertising attracts customer interest: Optionally fitted with a 7" LCD color display on the customer side, some of the SC II models stand out regarding their appealing full screen and permanent advertising. Moreover, based on the PLU, product information, pictures or additional product recommendations can be presented. The contents can be easily uploaded via USB stick, via Ethernet through manual distribution or via our RetailImpact software.

On these scales, advertising lists with any number of pictures can be set up for an entire year. When the device is not in use the entire display serves as an advertising medium, but during operation the size of the advertising space is reduced to display permanent advertising only.

## Inner values

An "intelligent system" controls all SC II scales: It consists of a Microsoft operating system, a fast processor and Ethernet connection via which the scales communicate with the back office and with each other – even wirelessly if required. Even in the standard version, all relevant hardware interfaces are integrated, such as for cash registers, scanners and E-Cash terminals.

In addition to energy saving components, the scales optionally have an integrated battery. This is a major advantage since they can work without an external power supply which is particularly important for use in the mobile retail sector. A 12 V connection for operation via a car battery is also available as an option.

## Data management

Fast flow of data for all activities: The remote service speeds up the communication between back office and the SC II scales. All settings can be checked and modified via remote control. Furthermore, data is managed simultaneously on all scales.

In addition, new scale program updates are transferred to the entire scale system. In parallel with this, all the data is saved automatically and then uploaded into the scale data memory again through a remote update. The dynamic hardware allows a fast response during operation and forms the basis for expansions.

## Flexible operating procedures

Many possibilities for operation: Depending on the requirements, the freely configurable tactile or membrane keyboards of the SC II scales can be adjusted to specific operating and operation procedures. PLUs or functions can be assigned to the keys easily.

In order to efficiently support employees the keyboard can be labeled with colored key pictograms using a frame. A complete operating sequence can be started simply at the touch of a button. This saves time and simplifies operation. Moreover, time-controlled reports can be generated without human intervention: upon request, periodically, daily, weekly and monthly reports are printed out on schedule and automatically.

# Diversity at the touch of a button

The keyboards of the SC II scales are easily adjustable to your individual requirements. The key functions are freely configurable and the keyboard layout can be customized.



Membrane keyboard



Tactile keyboard

## Keyboards SC II 100, 200, 400, 800

There are manifold options since the keyboards are variable through lettering or pictures and different numbers of keys. The keyboards can be labeled individually.



Silicone front membrane with 30 keys



Tactile keyboard with optional 24-key key frame for use in self-service areas



Self-service keyboard with 96 keys and optional operating keyboard (shown with an optional tactile keyboard)



Self-service keyboard with 48 keys, 24-key self-service key frame fitted onto operating keyboard

## Membrane or tactile keyboards

The SC II scales are fitted with membrane or tactile keyboards – or both. As a result of their colored keys, the membrane keyboards are easy to use. Thanks to their excellent look and feel the tactile keyboards ensure safe and convenient operation.



# SC II 800 7"

## Highlights

### Display

- LCD dot matrix display for weight, basic price, sales price and tare display

### Keyboard

- Membrane keyboard: Freely programmable

### Label printer

- Graphic-capable, printing of logos
- Label sizes and layouts freely configurable, possibility to switch to receipt printing

### Operating mode

- Assisted, self-service and quick service sales
- Cash register functions with amount tendered/change operation

### Reports/analyses

- Extensive, freely configurable reporting system for PLU, product groups, main product groups, VAT, operators, department, main department, training
- Sales transaction frequencies for department, product group and operators
- Various sorting criteria
- Price change journal, electronic receipt journal

## Options

### Licenses for software modules

- Cash register, scanning, e-cash, inventory, re-weighing, returns, delivery note, return delivery, cash invoice, purchase order, proof of origin, operator time recording, video journal, sum QR-barcode

### Customer display

- 7" TFT LCD color display
- Article images
- Cross selling images
- Full screen advertising
- Permanent advertising

### Keyboard

- Tactile keyboard, 84 keys for PLU and/or further functions
- A slip-on frame with 24 self-service keys can be mounted to the tactile keyboard

### Linerless printer

### WLAN

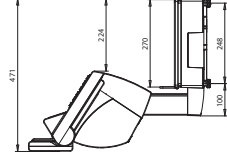
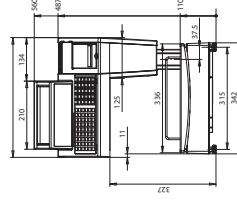
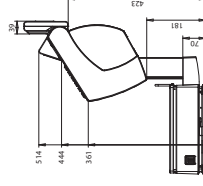
### Battery operation

- Internal lithium-ion battery pack (not in connection with WLAN), rechargeable via the scale's power supply unit

### External battery operation

- 12 V with a special battery connection cable (not in connection with WLAN)

## Dimensions





# SC II 800



## Highlights

### Display

- LCD dot matrix display for weight, basic price, sales price and tare display

### Keyboard

- Membrane keyboard: Freely programmable

### Label printer

- Graphic-capable, printing of logos
- Label sizes and layouts freely configurable, possibility to switch to receipt printing

### Operating mode

- Label layout on receipt paper
- Assisted, self-service and quick service sales

### Cash register functions with operation

- Amount tendered/change

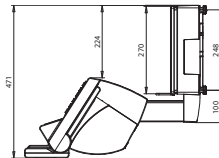
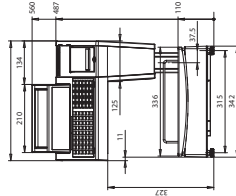
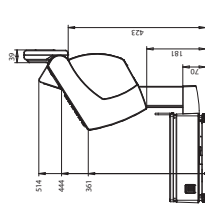
### Weight and fixed price labeling

- 

### Reports/analyses

- Extensive, freely configurable reporting system for PLU, product groups, main product groups, VAT, operators, department, main department, training
- Sales transaction frequencies for department, product group and operators
- Various sorting criteria
- Price change journal, electronic receipt journal

## Dimensions



## Options

### Licenses for software modules

- Cash register, scanning, e-cash, inventory, re-weighing, returns, delivery note, return delivery, cash invoice, purchase order, proof of origin, operator time recording, video journal, sum QR-barcode

### Keyboard

- Tactile keyboard, 84 keys for PLU and/or further functions

### A slip-on frame with 24 self-service keys can be mounted to the tactile keyboard

- 

### Linerless printer

- 

### WLAN

- 

### Battery operation

- Internal lithium-ion battery pack (not in connection with WLAN), rechargeable via the scale's power supply unit

### External battery operation

- 12 V with a special battery connection cable (not in connection with WLAN)



# SC II 500

## Highlights

### Display

- LCD dot matrix display for weight, basic price, sales price and tare display

### Keyboard

- Membrane keyboard: Freely programmable
- 24 self-service keys

### Self-service keyboard

- Number of self-service keys: Up to 72 or 120

### Possible mixed configuration different key sizes

- 

### Quick service keyboard

- Very large quick service keys: 96 standard

### Possible mixed configuration with different key sizes

- 

### Label printer

- Graphic-capable, printing of logos
- Label sizes and layouts freely configurable, possibility to switch to receipt printing

### Label layout on receipt paper

- 

### Operating mode

- Assisted, self-service and quick service sales
- Cash register functions with amount tendered/change operation
- Weight and fixed price labeling

## Options

### Licenses for software modules

- Cash register, scanning, e-cash, inventory, re-weighing, returns, delivery note, return delivery, cash invoice, purchase order, proof of origin, operator time recording, video journal, sum QR-barcode

### Keyboard

- Tactile keyboard, 84 keys for PLU and/or further functions

### A slip-on frame with 24 self-service keys can be mounted to the tactile keyboard

- 

### Self-service keyboard

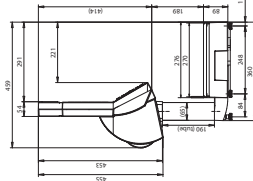
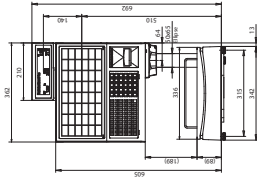
- Number of self-service keys: 48 standard and further 48 via additional keyboard

### Quick service keyboard

- Number of quick-service keys: 96 standard and further 96 via additional keyboard

### Linerless printer

- WLAN





# SC II 400 7"



## Highlights

**Display**

- LCD dot matrix display for weight, basic price, sales price and tare display

**Keyboard**

- Membrane keyboard: Freely programmable
- 24 self-service keys

**Self-service keyboard**

- Number of self-service keys: Up to 72 or 120
- Possible mixed configuration with different key sizes

**Quick service keyboard**

- Very large quick service keys: 96 standard
- Possible mixed configuration with different key sizes

### Label printer

- Graphic-capable, printing of logos
- Label sizes and layouts freely configurable, possibility to switch to receipt printing
- Label layout on receipt paper
- Talon selectable

**Operating mode**

- Assisted sales

## Options

**Licenses for software modules**

- Cash register, scanning, e-cash, inventory, re-weighing, returns, delivery note, return delivery, cash invoice, purchase order, proof of origin, operator time recording, video journal, sum QR-barcode

### Customer display

- 7" TFTLCD color display
- Article images
- Cross selling images
- Full screen advertising
- Permanent advertising

### Keyboard

- Tactile keyboard, 84 keys for PLU and/or further functions
- A slip-on frame with 24 self-service keys can be mounted to the tactile keyboard

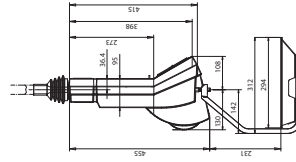
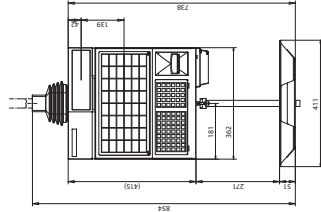
### Self-service keyboard

- Frame with 24 self-service keys attachable to operating keyboard

### Linerless printer

**WLAN**

## Dimensions



# SC II 400



## Highlights

**Display**

- LCD dot matrix display for weight, basic price, sales price and tare display

### Keyboard

- Membrane keyboard: Freely programmable
- 24 self-service keys

### Self-service keyboard

- Number of self-service keys: Up to 72 or 120
- Possible mixed configuration with different key sizes

### Quick service keyboard

- Very large quick service keys: 96 standard
- Possible mixed configuration with different key sizes

### Label printer

- Graphic-capable, printing of logos
- Label sizes and layouts freely configurable, possibility to switch to receipt printing
- Label layout on receipt paper
- Talon selectable

### Operating mode

- Assisted sales

## Options

**Licenses for software modules**

- Cash register, scanning, e-cash, inventory, re-weighing, returns, delivery note, return delivery, cash invoice, purchase order, proof of origin, operator time recording, video journal, sum QR-barcode

### Keyboard

- Tactile keyboard, 84 keys for PLU and/or further functions
- A slip-on frame with 24 self-service keys can be mounted to the tactile keyboard

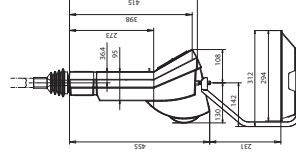
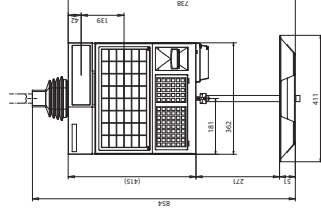
### Self-service keyboard

- Frame with 24 self-service keys attachable to operating keyboard

### Linerless printer

**WLAN**

## Dimensions







# SC II 200



## Highlights

**Display**

- LCD dot matrix display for weight, basic price, sales price and tare display

**Keyboard**

- Membrane keyboard: Freely programmable

**Label printer**

- Graphic-capable, printing of logos
- Label sizes and layouts freely configurable, possibility to switch to receipt printing

**Operating mode**

- Assisted, self-service and quick service sales

**Reports/analyses**

- Extensive, freely configurable reporting system for PLU, product groups, main product groups, VAT, operators, department, main department, training
- Sales transaction frequencies for department, product group and operators
- Various sorting criteria
- Price change journal, electronic receipt journal

## Options

**Licenses for software modules**

- Cash register, scanning, e-cash, inventory, re-weighing, returns, delivery note, return delivery, cash invoice, purchase order, proof of origin, operator time recording, video journal, sum QR-barcode

**Keyboard**

- Tactile keyboard, 84 keys for PLU and/or further functions
- A slip-on frame with 24 self-service keys can be mounted to the tactile keyboard

**Linerless printer**

**WLAN**

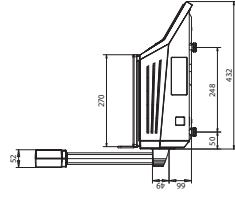
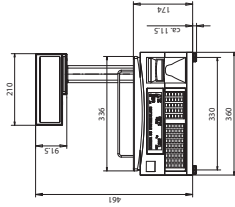
**Battery operation**

- Internal lithium-ion battery pack (not in connection with WLAN), rechargeable via the scale's power supply unit within 3.5 hours

**External battery operation**

- 12 V with a special battery connection cable (not in connection with WLAN)

## Dimensions



## Highlights

**Display**

- LCD dot matrix display for weight, basic price, sales price and tare display

**Keyboard**

- Membrane keyboard: Freely programmable

**Label printer**

- Graphic-capable, printing of logos
- Label sizes and layouts freely configurable, possibility to switch to receipt printing

**Operating mode**

- Assisted, self-service and quick service sales

**Reports/analyses**

- Weight and fixed price labeling

**External battery operation**

- Extensive, freely configurable reporting system for PLU, product groups, main product groups, VAT, operators, department, main department, training
- Sales transaction frequencies for department, product group and operators
- Various sorting criteria
- Price change journal, electronic receipt journal



# SC II 100 7"



## Options

**Licenses for software modules**

- Cash register, scanning, e-cash, inventory, re-weighing, returns, delivery note, return delivery, cash invoice, purchase order, proof of origin, operator time recording, video journal, sum QR-barcode

**Customer display**

- 7" TFT LCD color display
- Article images
- Cross selling images
- Full screen advertising
- Permanent advertising

**Keyboard**

- Tactile keyboard, 84 keys for PLU and/or further functions
- A slip-on frame with 24 self-service keys can be mounted to the tactile keyboard

**Linerless printer**

**WLAN**

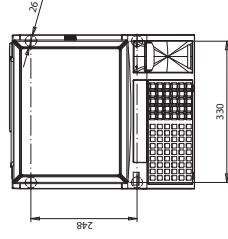
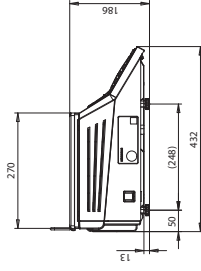
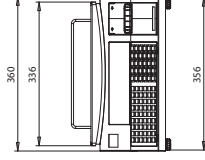
**Battery operation**

- Internal lithium-ion battery pack (not in connection with WLAN), rechargeable via the scale's power supply unit

**External battery operation**

- 12 V with a special battery connection cable (not in connection with WLAN)

## Dimensions





# SC II 100

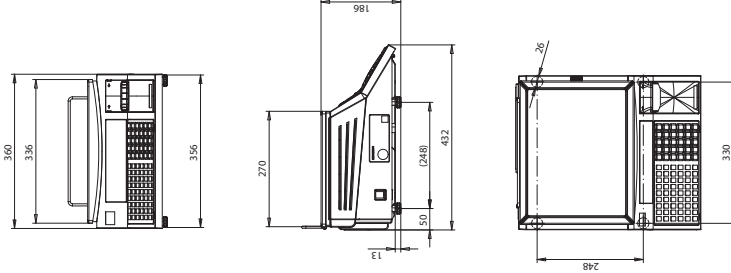
## Highlights

- Display**
- LCD dot matrix display for weight, basic price, sales price and tare display
- Keyboard**
- Membrane keyboard: Freely programmable
- Label printer**
- Graphic-capable, printing of logos
  - Label sizes and layouts freely configurable, possibility to switch to receipt printing
- Operating mode**
- Assisted, self-service and quick service sales
  - Cash register functions with amount tendered/change operation
  - Weight and fixed price labeling
- Reports/analyses**
- Extensive, freely configurable reporting system for PLU, product groups, main product groups, VAT, department, training
  - Sales transaction frequencies for department, product group and operators
  - Various sorting criteria
  - Price change journal, electronic receipt journal

## Options

- Licenses for software modules**
- Cash register, scanning, e-cash, inventory, re-weighing, returns, delivery note, return delivery, cash invoice, purchase order, proof of origin, operator time recording, video journal, sum QR-barcode
- Keyboard**
- Tactile keyboard, 84 keys for PLU and/or further functions
  - A slip-on frame with 24 self-service keys can be mounted to the tactile keyboard
- Linerless printer**
- WLAN**
- Battery operation**
- Internal lithium-ion battery pack rechargeable via the scale's power supply unit
- External battery operation**
- 12 V with a special battery connection cable (not in connection with WLAN)

## Dimensions



# SC II 100 B(G)

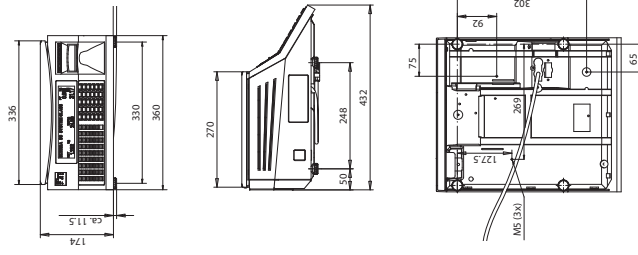
## Highlights

- Display**
- LCD dot matrix display for weight, basic price, sales price and tare display
- Keyboard**
- Membrane keyboard: Freely programmable
- Label printer**
- Graphic-capable, printing of logos
  - Label sizes and layouts freely configurable, possibility to switch to receipt printing
- Operating mode**
- Assisted, self-service and quick service sales
  - Cash register functions with amount tendered/change operation
  - Weight and fixed price labeling
- Reports/analyses**
- Extensive, freely configurable reporting system for PLU, product groups, main product groups, VAT, department, training
  - Sales transaction frequencies for department, product group and operators
  - Various sorting criteria
  - Price change journal, electronic receipt journal

## Options

- Weighing range**
- Various weighing ranges up to 150 kg (SC II 100 G)
- Licenses for software modules**
- Cash register, scanning, e-cash, inventory, re-weighing, returns, delivery note, return delivery, cash invoice, purchase order, proof of origin, operator time recording, video journal, sum QR-barcode
- Keyboard**
- Tactile keyboard, 84 keys for PLU and/or further functions
  - A slip-on frame with 24 self-service keys can be mounted to the tactile keyboard
- Linerless printer**
- WLAN**
- Battery operation**
- Internal lithium-ion battery pack (not in connection with WLAN), rechargeable via the scale's power supply unit
- External battery operation**
- 12 V with a special battery connection cable (not in connection with WLAN)

## Dimensions



# For top quality and reliable performance

In your day-to-day work with the SC II scales, you can rely on high-quality cleaning products and original consumables in Bizerba quality. Everything is perfectly matched to your products ensuring the best possible results and longevity of your investment. A perfect example of teamwork with added benefits for you.

## Cleaning agents

Optimal functioning and constant availability of your devices and machines requires professional care. Our high quality cleaning agents play an important role here since they are specifically developed for demanding conditions in retail, industry and food service. They are easy to use and show impressive results: Perfect cleanliness providing protection as well as disinfecting hygiene for sensitive components and smooth surfaces. For each material whether stainless steel, plastic or glass, we have a suitable cleaning agent in our comprehensive assortment. Clean solutions for your work area or production facility.

## Quality labels

Many functions using minimal space: Labels are an indicator for price and ingredients and communicate with industry, trade and end customers via barcodes, QR codes, RF and RFID tags. As a key component of the packaging they fulfill important marketing functions with regard to corporate design, brand names and product marketing. Furthermore, as a production factor, they have an impact on costs and feasibility in the manufacturing process. Our quality labels offer almost unlimited possibilities: Ranging from the ecological, high quality linerless version and thermal-sensitive labels which are conform with the Food Information Regulation up to multi-functional labels for product and brand protection. Also here we produce in an economical and innovative manner. Learn more about our labels.



# All possibilities at a glance

# Information to suit your every need

	SCI 800 with 7"	SCI 11 500	SCI 11 400 with 7"	SCI 11 200	SCI 11 100 with 7"	SCI 11 100	SCI 11 100 G	SCI 11 100 B
<b>Ideal for</b>								
Sausages/cold cuts	•	•	•	•	•	•	•	•
Meat	•	•	•	•	•	•	•	•
Cheese	•	•	•	•	•	•	•	•
Seafood	•	•	•	•	•	•	•	•
Fruit/vegetables	•	•	•	•	•	•	•	•
Bread/bakery department	•	•	•	•	•	•	•	•
Non-food	•	•	•	•	•	•	•	•
<b>Application</b>								
Counter service	•	•	•	•	•	•	•	•
Self-service	•	•	•	•	•	•	•	•
Weigh price labeling/pre-packaging	•	•	•	•	•	•	•	•
Goods receiving/commissioning	•	•	•	•	•	•	•	•
Multimedia applications	•	•	•	•	•	•	•	•
Cash register	•	•	•	•	•	•	•	•
<b>Application area?</b>								
Food trade	•	•	•	•	•	•	•	•
Food stores	•	•	•	•	•	•	•	•
Fine foods/delicatessen	•	•	•	•	•	•	•	•
Gastronomy/snack bars	•	•	•	•	•	•	•	•
Hardware stores	•	•	•	•	•	•	•	•
Mobile trading	•	•	•	•	•	•	•	•
<b>Equipment</b>								
Self-service keyboard with 48 keys	X	•	•	X	X	X	X	X
Self-service keyboard with 96 keys	X	•	•	X	X	X	X	X
Tactile keyboard for 24 direct PLU keys*	•	•	•	•	•	•	•	•
Tactile keyboard for 30 direct PLU keys*	•	•	•	•	•	•	•	•
Tactile keyboard for 54 direct PLU keys*	•	•	•	•	•	•	•	•
<b>Options</b>								
Cash register drawer interface	•	•	•	•	•	•	•	•
WLAN	•	•	•	•	•	•	•	•
Separate load receptors up to 150 kg	X	X	X	X	X	X	X	X

\*plus 30 additional function keys

## Key

- Optimally suitable for this purpose
- Suitable for this purpose
- X Not suitable for this purpose

There are various quick and effective routes to finding the perfect solution for your company. Whether you would like to contact us online or prefer to arrange a face-to-face meeting, Bizerba is always happy to help.

### In person

If you would like to set up a personal meeting to discuss your on-site circumstances and possibilities, please contact us directly. Our customer advisors are always on hand to assist you, from the initial idea to detailed planning and from implementation to staff training. You can find details of how to contact us on the back page of this brochure.

### Would you like to learn more?

Are you keen to obtain more detailed information about Bizerba's products? If so, please do not hesitate to contact us. Whether you require scale drawings, technical details or interface specifications, we're happy to advise you. If you are looking for a fast and reliable way to find the right solutions for your company, there are various routes to the perfect result. Whether you would like to contact us online or prefer to arrange a face-to-face meeting, Bizerba is always happy to help.

### Online

The Bizerba website provides a quick, easy and focused overview of all our product solutions as well as relevant topics relating to weighing, packaging, pricing and labeling. You can even experience our solutions from all angles 'virtually' for yourself thanks to videos and 360° animations. Simply visit our website to see more:

[www.bizerba.com](http://www.bizerba.com)



# Members of the Bizerba Group

---

## **Bizerba SE & Co. KG**

Wilhelm-Kraut-Straße 65  
72336 Balingen  
Germany

T +49 74 33 12-0  
F +49 74 33 12-2696  
info@bizerba.com

**www.bizerba.com**

---

## **Bizerba USA Inc.**

1804 Fashion Court  
Joppa, MD 21085  
USA

T Office +1 732 565-6000  
T Service +1 732 565-6001  
F +1 732 819-0429  
us.info@bizerba.com

**www.bizerbausa.com**

---

## **Bizerba UK Limited**

2-4 Erica Road  
Stacey Bushes  
Milton Keynes  
Buckinghamshire  
MK12 6HS

UK  
T +44 1908 6827-40  
F +44 1908 6827-77  
sales@bizerba.co.uk

**www.bizerba.com**

---

## **Bizerba Canada Inc.**

6411 Edwards Blvd  
Mississauga  
Ontario L5T2P7  
Canada

T +1 888 240-3722  
ca.info@bizerba.com

**www.bizerba.ca**

---

## **Bizerba Shanghai Weigh Tech & Systems Co. Ltd.**

D-3, Qianpu Road,  
Shuhui Real Est.Park  
East New Area of Songjiang,  
Ind. Zone  
201611 Shanghai  
China

T +86 21 676009-99  
F +86 21 676009-98  
marketing.china@bizerba.cn

**www.bizerba.cn**

I/440 en © 2nd edition. Subject to modifications. 92016

Deviations in color, printing errors due to the photographic material or printing, or changes in construction and model are reserved.